

Using WinSCP to Transfer Files to/from your lab H: drive and Personal Computer

1. Download WinSCP from AU Install (OIT web page, Students tab).
2. Install it on your computer in the usual way.
3. Run WinSCP then

Click the “New Session” tab or on the top menu click Session > New Session. Use the following settings.

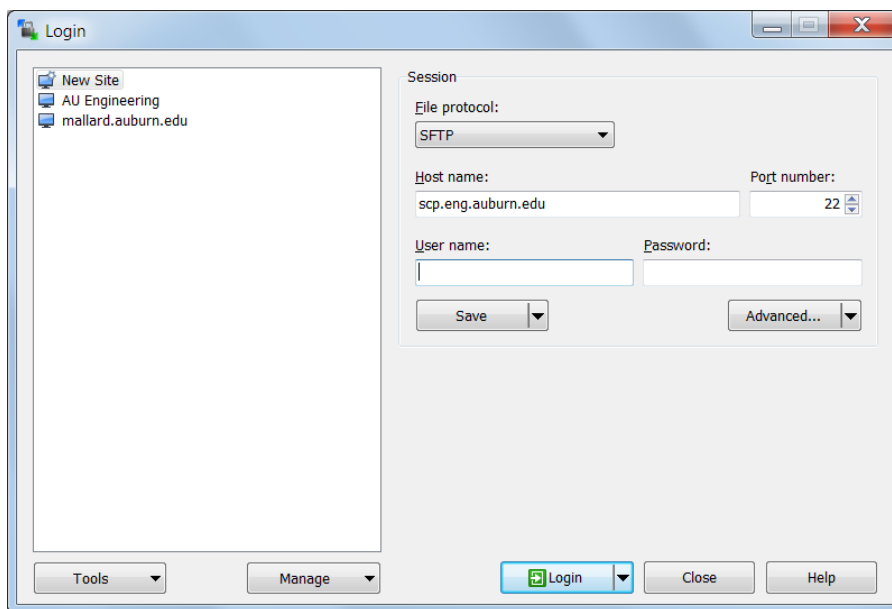
File protocol – select “SFTP” (which is the SSH File Transfer Protocol)

Host name: scp.eng.auburn.edu

Port: 22 (*should be the default*)

Username: *enter your AU username*

Password: *leave blank if you want to be queried each time you run WinSCP. Otherwise, enter your AU password to save your password.*



Click “Login”. If you are queried about a security certificate, click “Allow” and check “Don’t ask again”. Enter your password if not saved above.

In the WinSCP window, you should now see your “local” drive in the left pane and your “remote” H: drive in the right pane. After navigating to the folder of choice, you should be able to copy files by dragging/dropping to/from the left and right panes as well to/from a file browser on your personal computer. You can also set “Local” and “Remote” bookmarks using the top menus and/or toolbar buttons.