

Summary of RAP Projects

Illinois DOT/Illinois Center for Transportation

Impact of High RAP Content on Pavement Structural Performance

Sam Carpenter

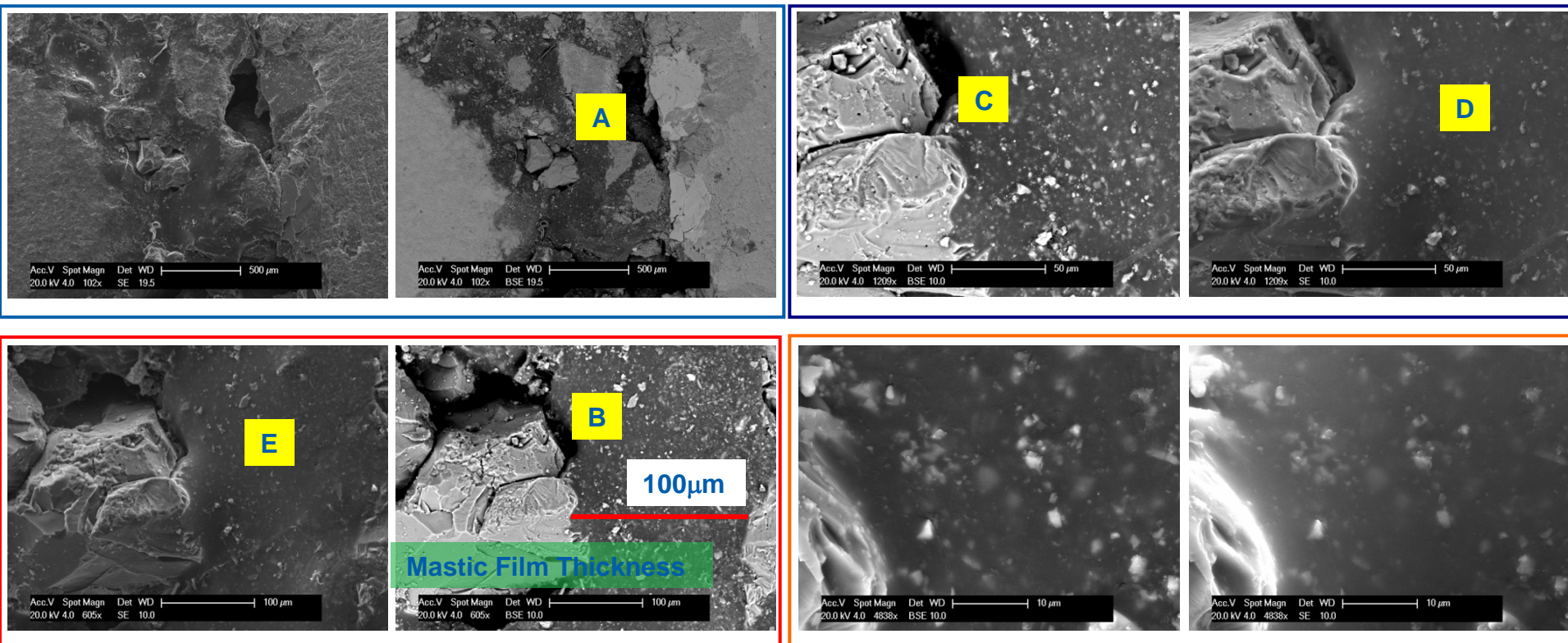
Imad Al-Qadi

Determination of Usable Residual Asphalt Binder in RAP

Imad Al-Qadi

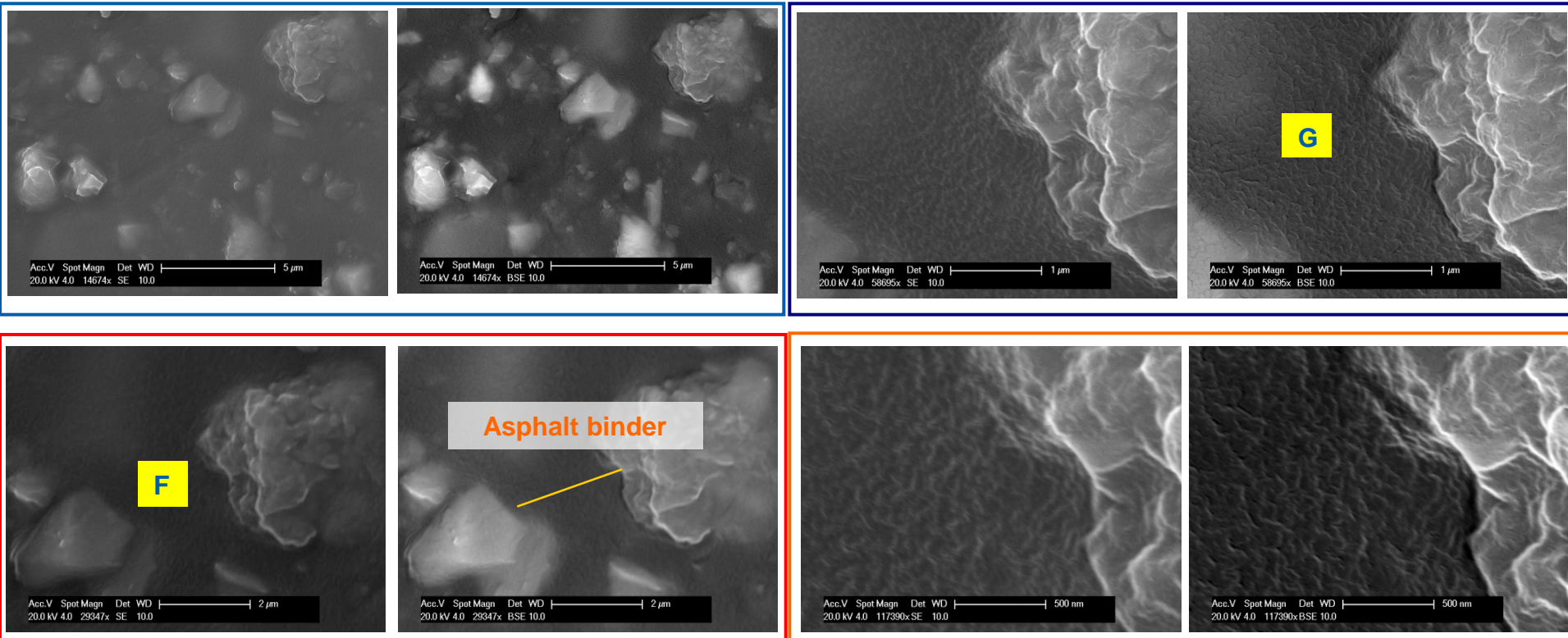
Film Thickness Measurement

- Images were captured at low magnification rate and were repetitively enlarged



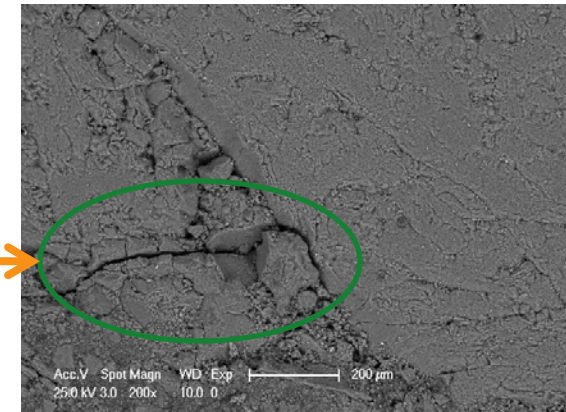
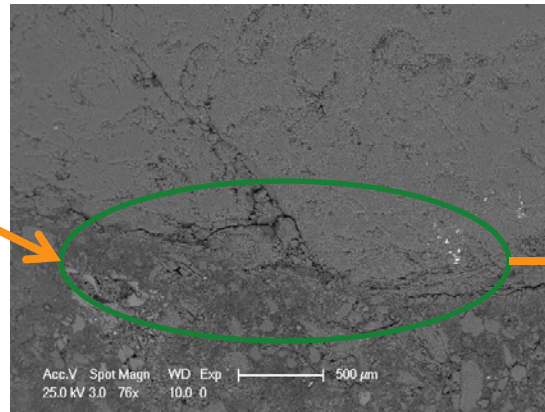
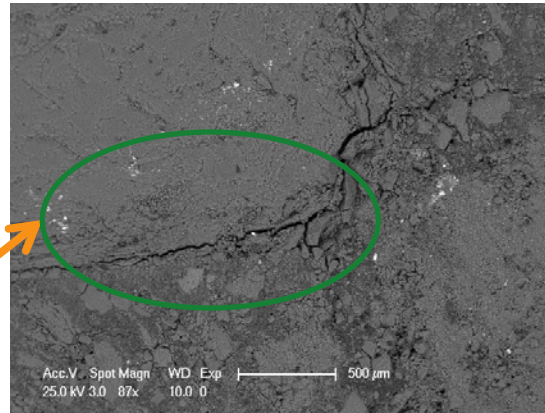
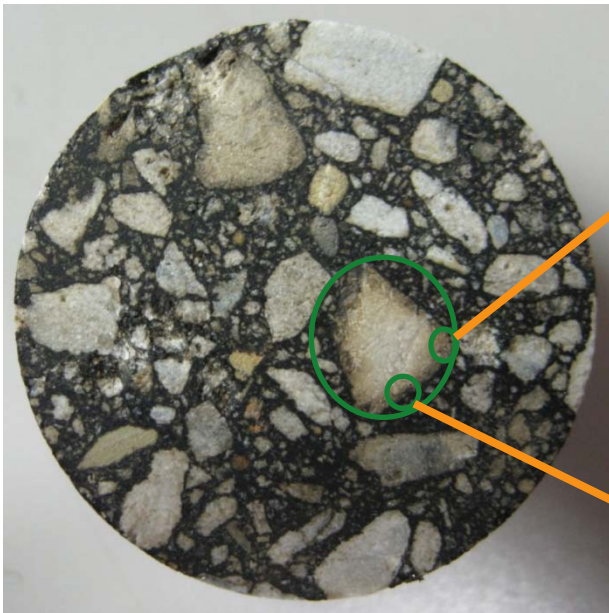
Film Thickness Measurement

- From 5mm to 500nm:

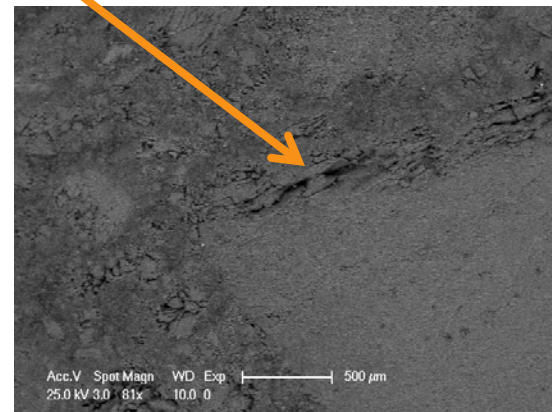
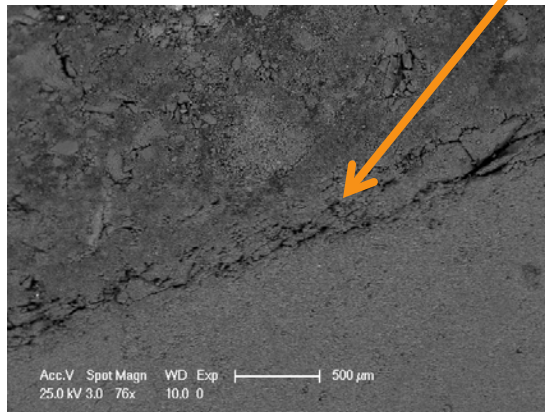


Cracks around the RAP Aggregate

80% RAP



Fragmentation around RAP Aggregate



Virgin Aggregate

Generally Well Bonded Interface

