

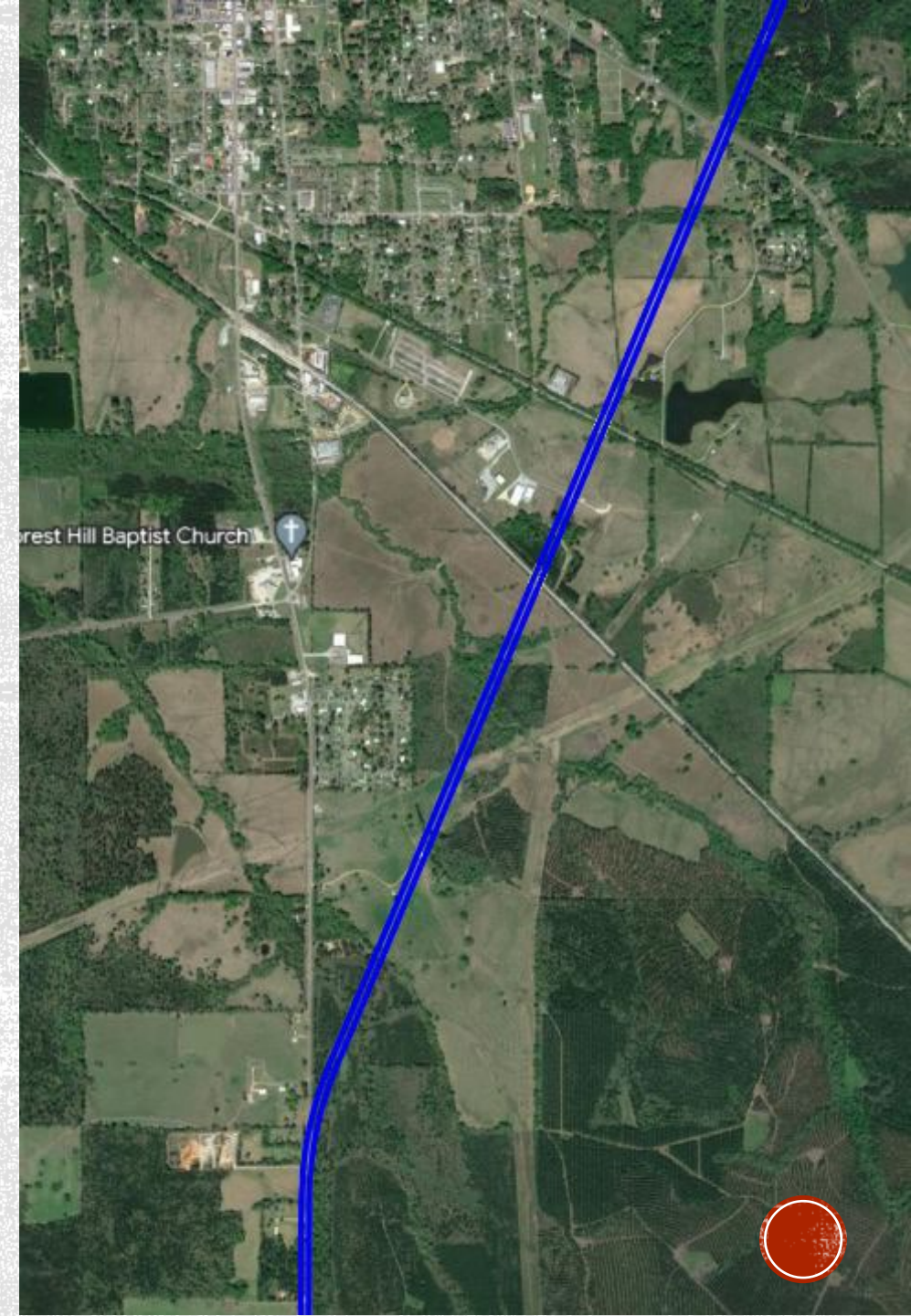


LINDEN BYPASS



SOUTH BYPASS

- \$55.6 Million Contract
- 1.1 Million CY Borrow
- 4,800 CY Concrete
- 9000 LF RCP
- 72,000 Tons Asphalt
- W.S. Newell & Sons



















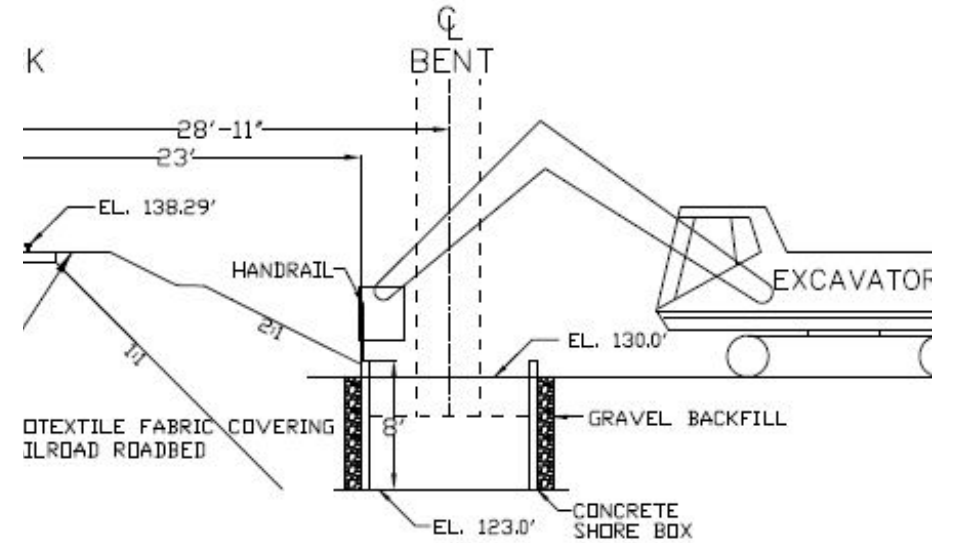








CONCRETE SHORING BOXES



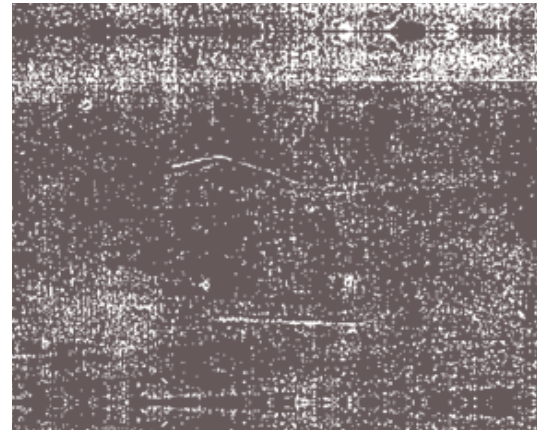
SECTION VIEW
PERPENDICULAR TO TRACK
BENT 3 SBR







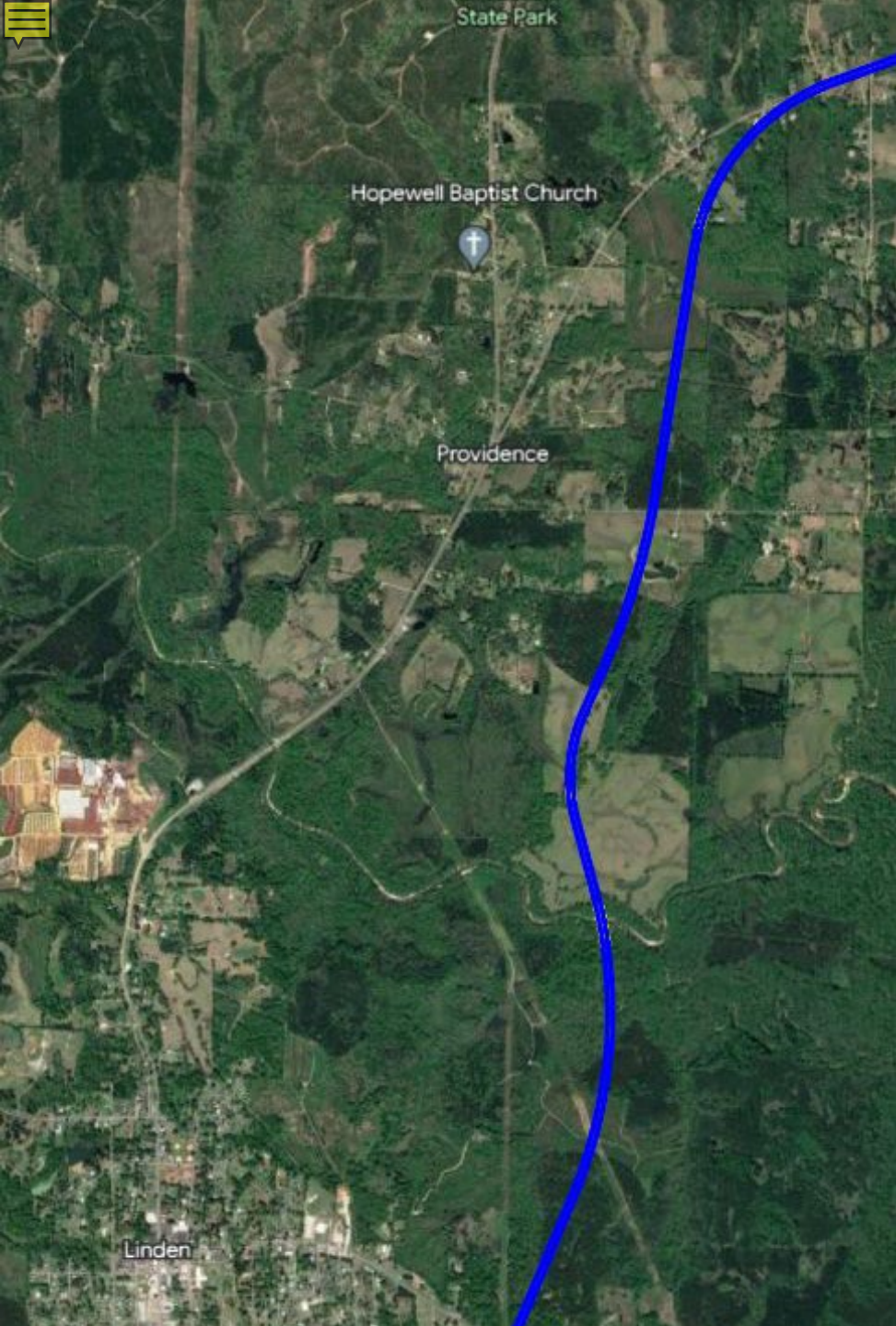
VOLKERT



PROJECT MANAGEMENT

FAGAN
FAGAN CONSULTING LLC





NORTH BYPASS

- \$83.5 Million Contract
- 957,000 CY Borrow
- 1.1 Million CY Unclassified
- 5,516 CY Concrete
- 111,000 Tons Asphalt
- Yates Construction



























PIPE PILING

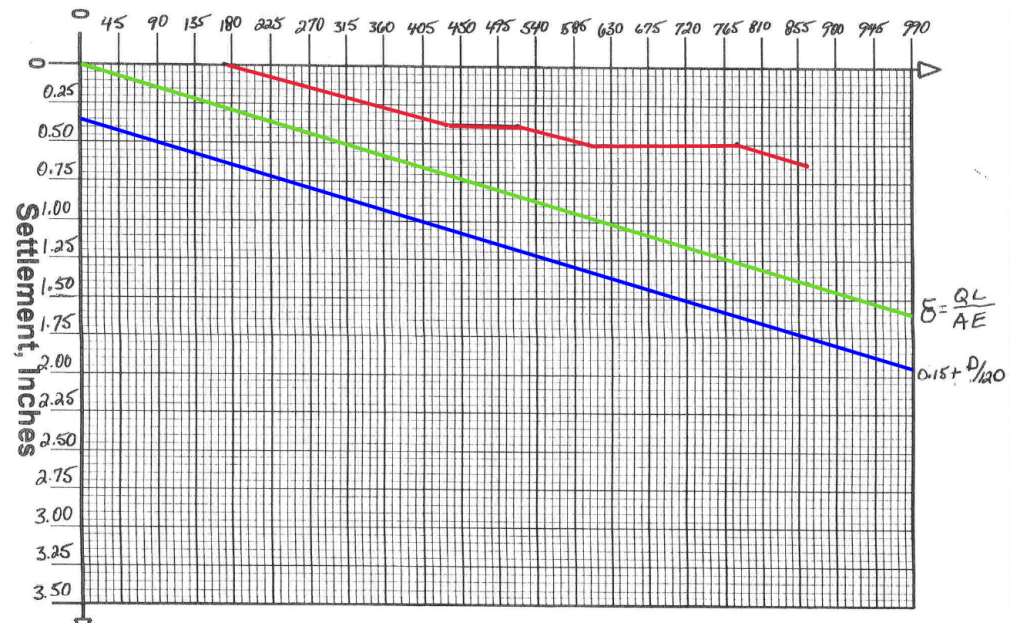
- **24" Steel Pipe Pile**
- **Required Resistance
432.5 Tons**
- **Estimated Tip -3'**





SW

SW



GRL Engineers, Inc.
 PDILOT2 2021.1.61.0

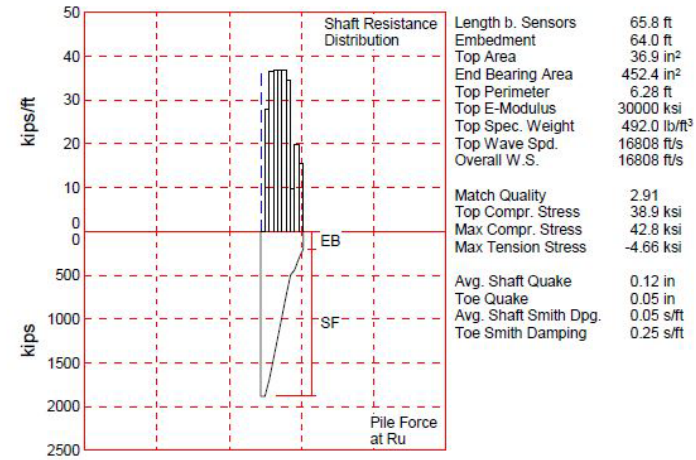
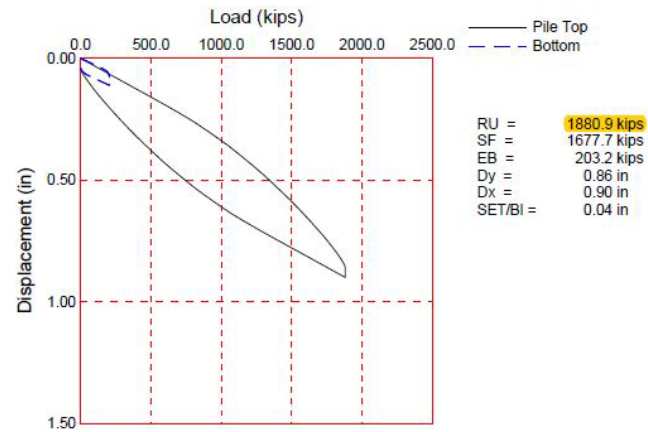
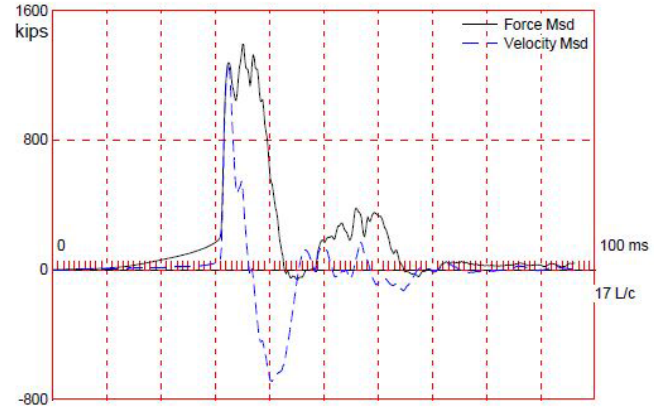
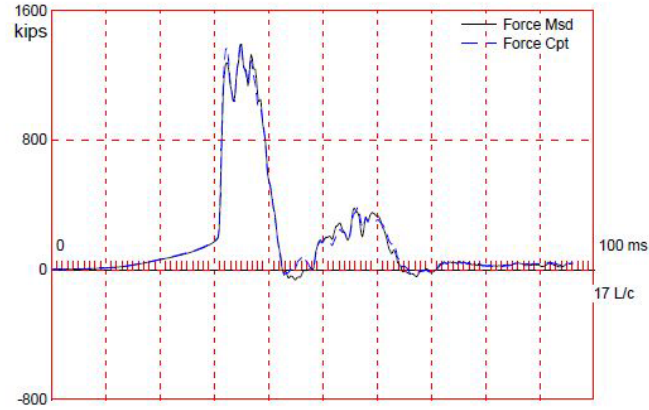
Page 1
 Printed 14-December-2023

Case Method & iCAP® Results

RACR-046-303-001 - BENT#43PILE#4RESTRIKE SR303 OVER CHICKASAW BOUGE
 OP: NM Date: 14-December-2023
 AR: 36.91 in² SP: 0.492 k/ft²
 LE: 65.80 ft EM: 30,000 ksi
 WS: 16.807.9 f/s JC: 0.70

BL#	Depth ft	BLC bl/ft	EMX k-ft	ETR (%)	STK ft	RX2 kips
1	64.00	0	9.5	7.9	0.00	753
2	64.00	0	43.7	36.5	10.70	1,546
3	64.00	0	60.0	50.1	10.93	1,745
4	64.00	0	58.1	48.5	10.74	1,735
5	64.00	0	60.9	50.9	10.64	1,763
6	64.00	0	34.9	29.2	9.49	1,352
7	64.00	0	22.0	18.3	7.58	1,070
8	64.00	0	11.8	9.9	5.76	797
9	64.00	0	3.1	2.6	4.29	425
Average			33.8	28.2	8.77	1,243

Total number of blows analyzed: 9











John Graham, P.E.
grahamj@dot.state.al.us