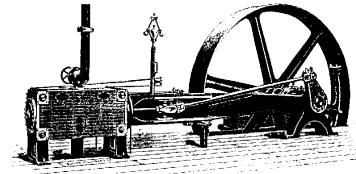


AU MECHANICAL ENGINEERING

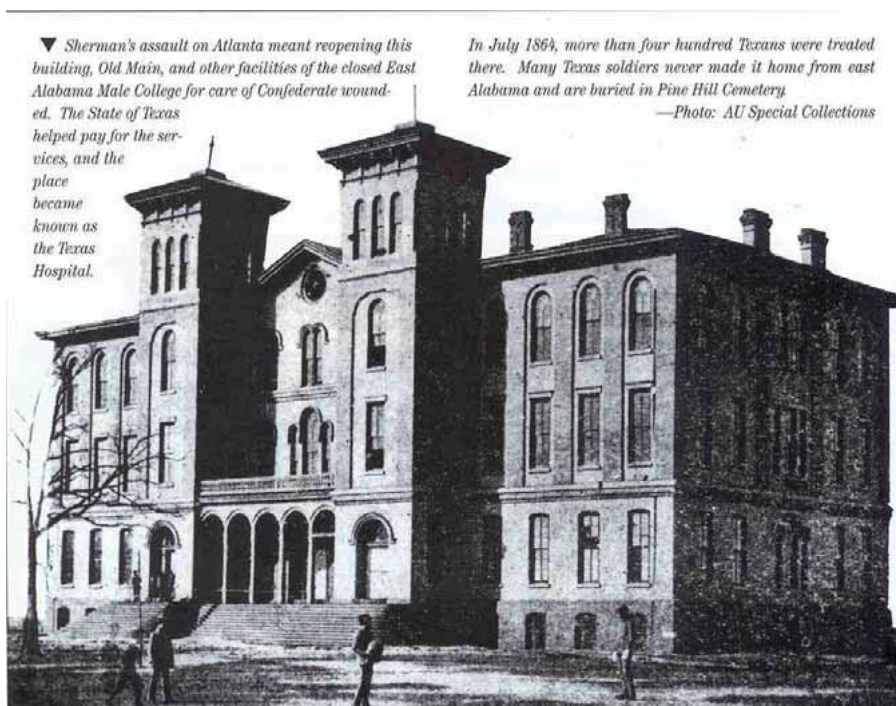
A Pictorial History - 120 Years and Counting

Jeffrey C. Suhling
Department of Mechanical Engineering
Auburn University
Auburn, AL 36849-5341
Office: +1-334-844-3332
Fax: +1-334-844-3307
E-Mail: jsuhling@eng.auburn.edu



1

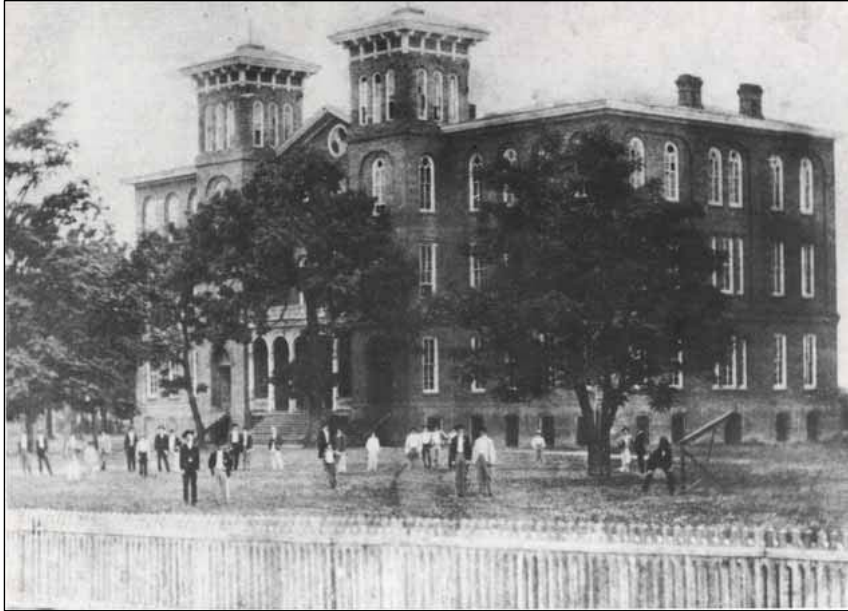
AU – 1860s



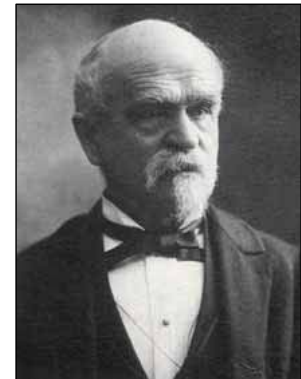
2

AU – 1880s

Agricultural and Mechanical College (AMC) of Alabama



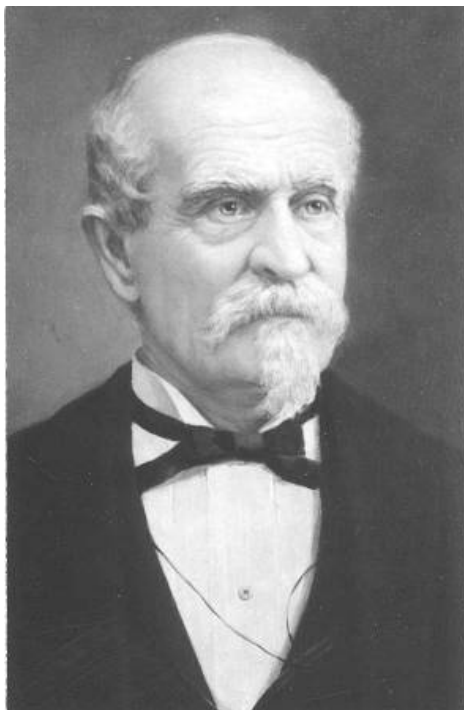
Old Main



William Leroy Broun

3

AU – 1880s



William Leroy Broun
SECOND PRESIDENT

Died January 23, 1902, while President of the Alabama Polytechnic Institute. This institution achieved a national standing in technical and scientific education during the twenty years of his able administration.

Dr. Broun was born in Loudoun County, Virginia, in 1827. He graduated from the University of Virginia in 1850, and at once accepted a professorship in the College of Oakland, Mississippi; later, he served as a professor in the University of Georgia. In 1856 he returned to Virginia and established the Bloomfield Academy, a noted and successful classical school.

In 1861, at the call of Virginia, he hastened to the front, serving as an officer of artillery in the Confederate service. Dr. Broun's scientific and mathematical ability soon made him authority in ordnance and artillery, and, in recognition of his skill, he was placed in charge of the Arsenal at Richmond, directing the manufacture of guns and munitions of war for the Confederacy. He was, perhaps, the most thoroughly equipped officer in the Confederate service for this work. General R. E. Lee held him in highest esteem. It was at this period that he first realized the fatal deficiency of the Southern youth in technical training.

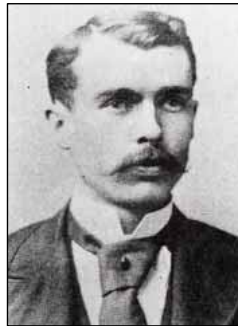
After the war, Dr. Broun was elected to the chair of Natural Philosophy in the University of Georgia. In 1872 he was made president of the Georgia Agricultural and Mechanical College. From 1875 to 1882 he filled the chair of Mathematics in Vanderbilt University. He left Vanderbilt to become president of the Alabama Polytechnic Institute, where he remained until his death, in 1902.



4

AU – 1880s

- Department of Mechanic Arts Formed in 1884-1885
- George H. Bryant from MIT was Hired in 1885 as the First Instructor in “Mechanics”. He resigned in 1892.
- B. A. Blakely from Cornell and John Jenkins Wilmore from Purdue Hired as Instructors in Mechanic Arts



J. J. Wilmore

5

AU – 1880s

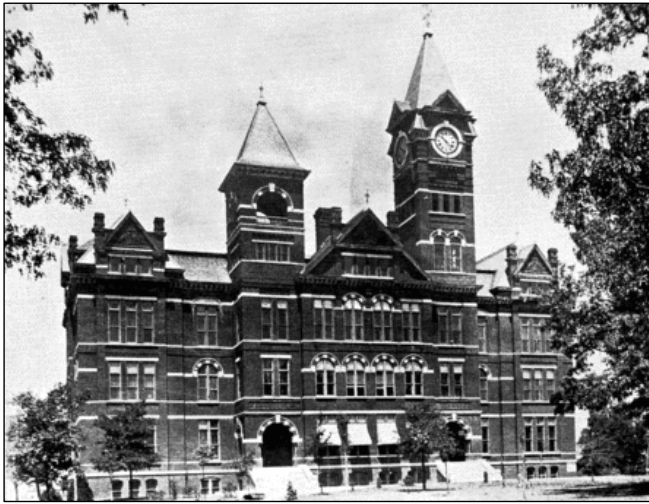


William James Samford

Old Main Burned in 1887 and Samford Hall Built

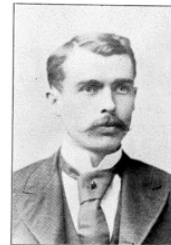
6

AU – 1890s



1898 Glom

JOHN J. WILMORE, M. E., born October 15, 1864, at Winchester, Indiana. Graduated at Purdue University, Lafayette, Ind., in June, 1888, receiving the degree of M. E. Came to Alabama Polytechnic Institute in 1888 as Assistant in Mechanic Arts. In 1891 was made Director of the Department of Mechanic Arts, which position he now holds.



JOHN J. WILMORE, M. E.

7

AU – 1890s

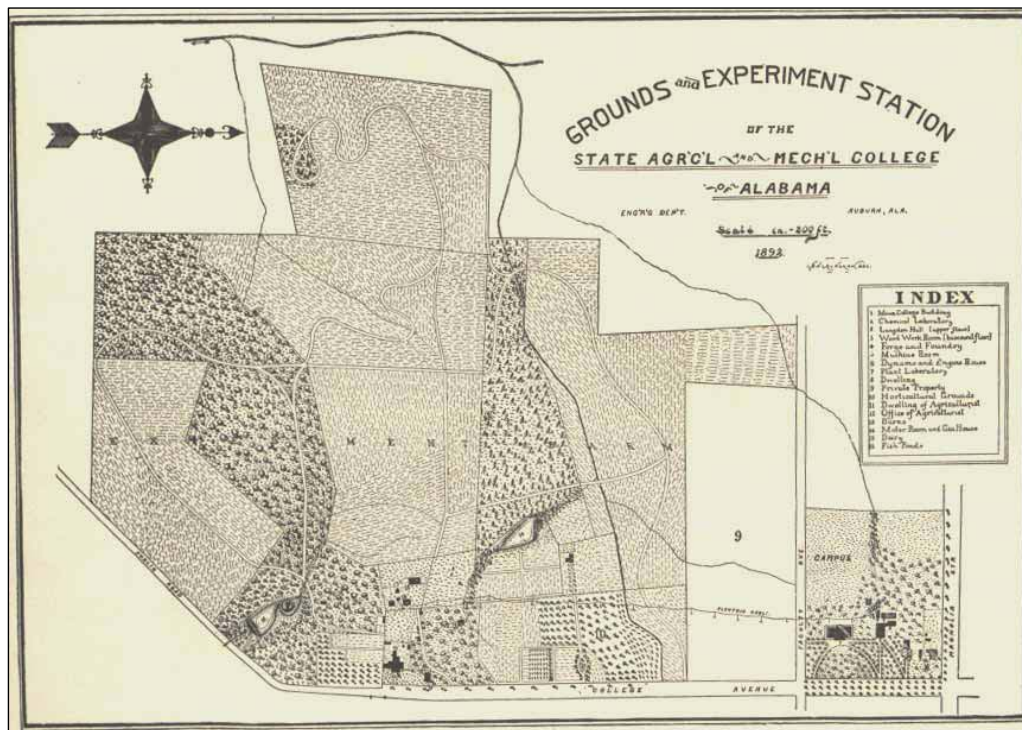


In 1898-99 AMC was Renamed
Alabama Polytechnic Institute (API)



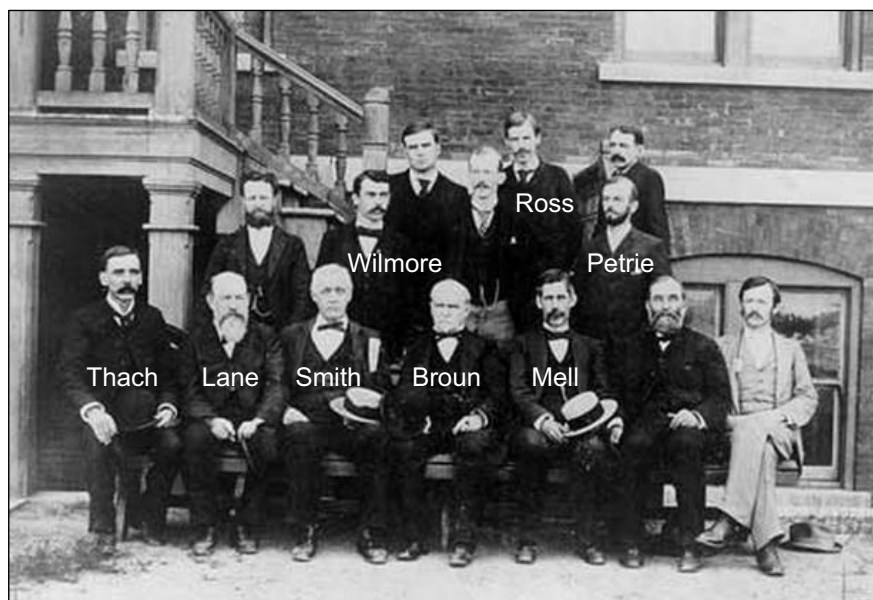
8

AU – 1890s



9

AU – 1890s



The Faculty - 1890s

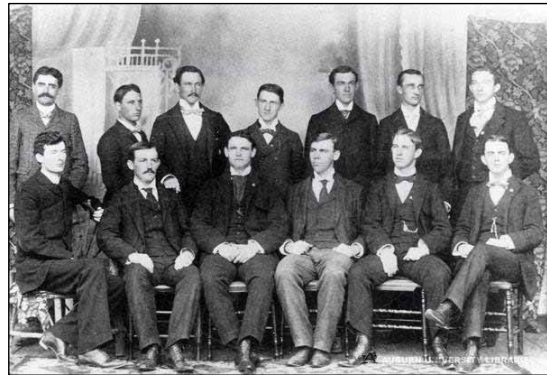
10

AU – 1890s

Graduating Classes



1893



1896

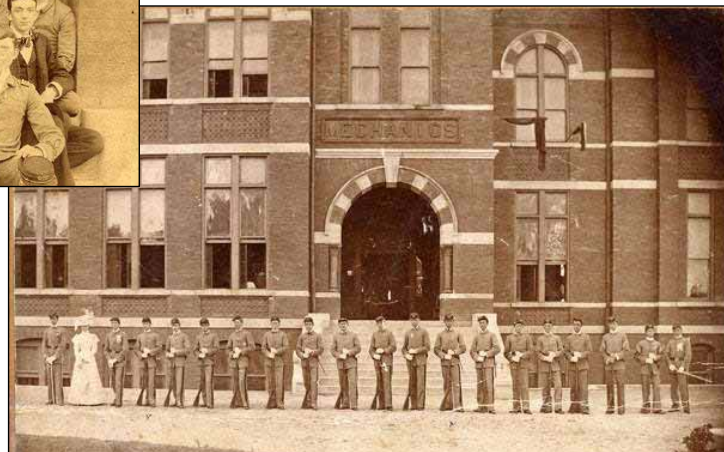
11

AU – 1890s

Graduating Classes



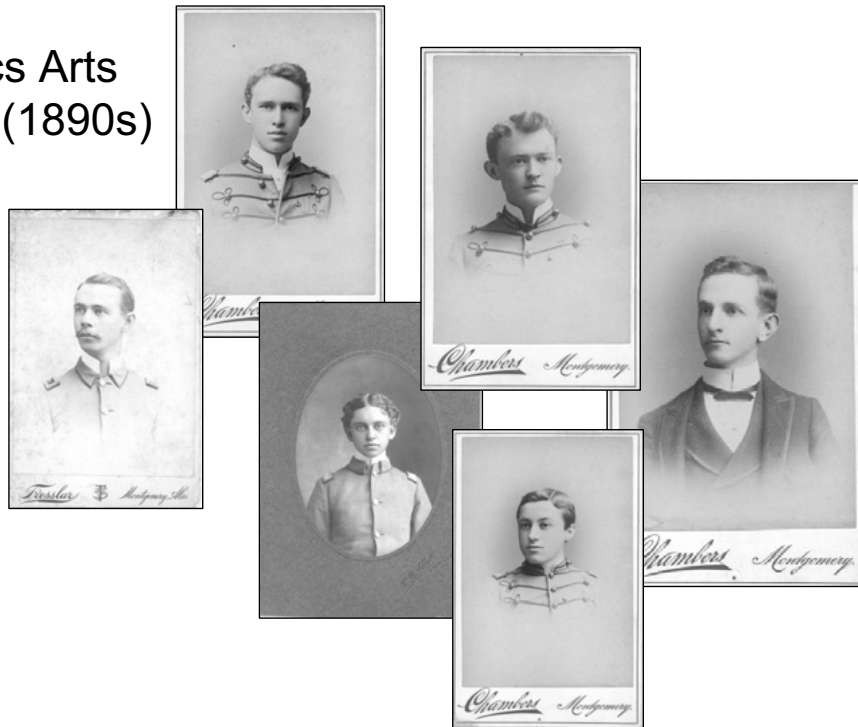
1895



12

AU – 1890s

Mechanics Arts Students (1890s)



13

AU – 1890s

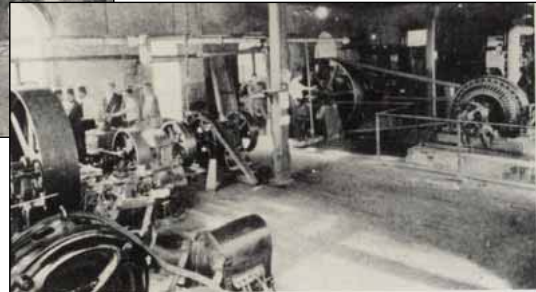
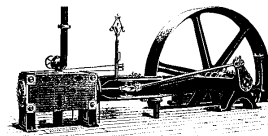
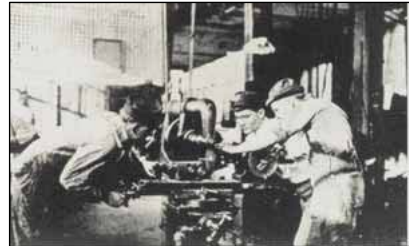
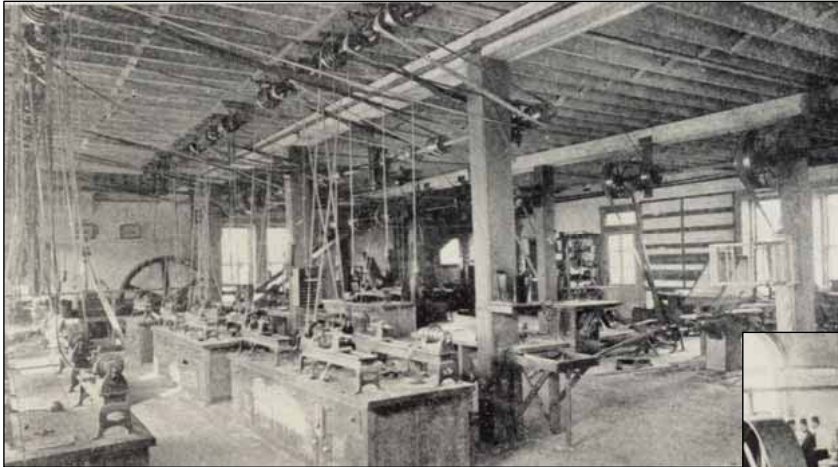
Langdon Hall – Home of Mechanic Arts Laboratories



14

AU – 1890s

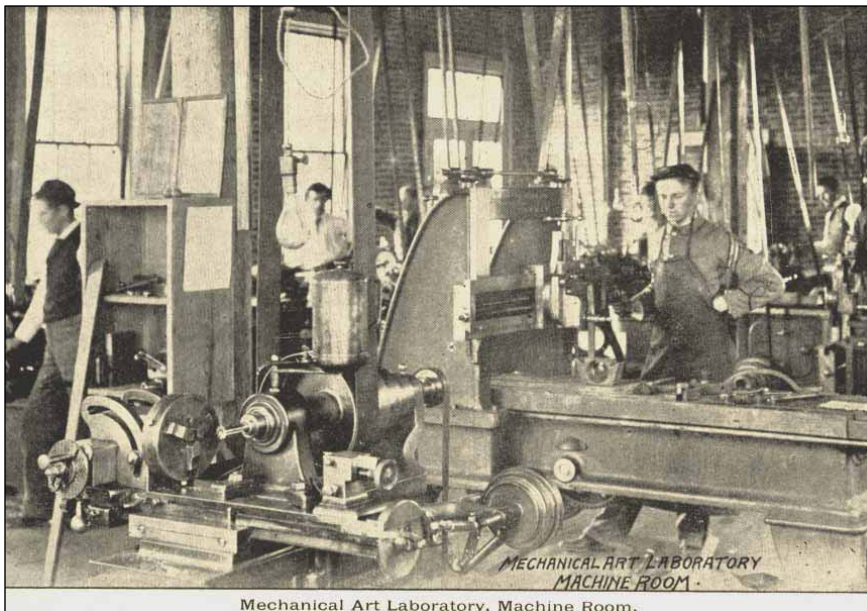
Mechanic Arts Lab in Langdon Hall



15

AU – 1890s

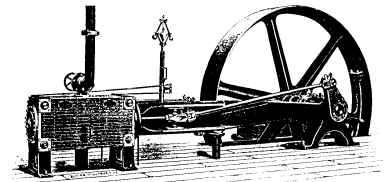
Mechanic Arts Lab in Langdon Hall



16

AU – 1890s

Mechanic Arts Lab in Langdon Hall



17

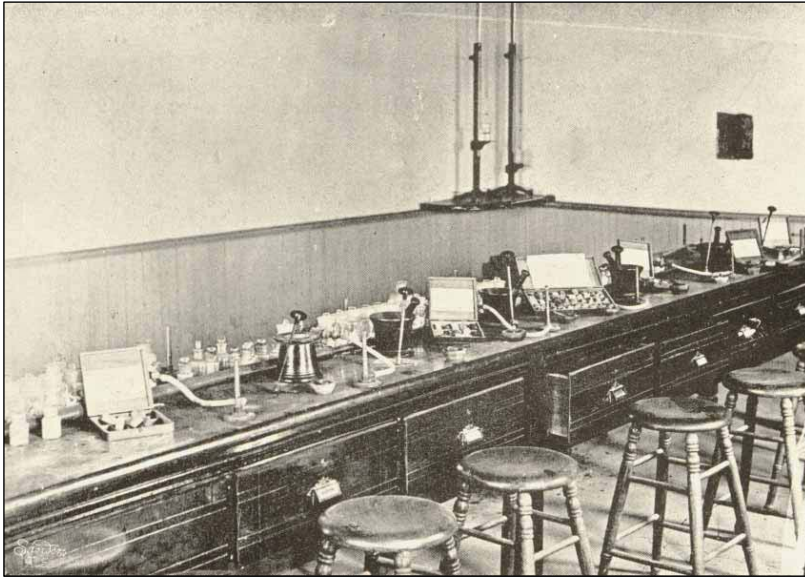
AU – 1890s



1893 – Mechanic Arts Engineering Lab

18

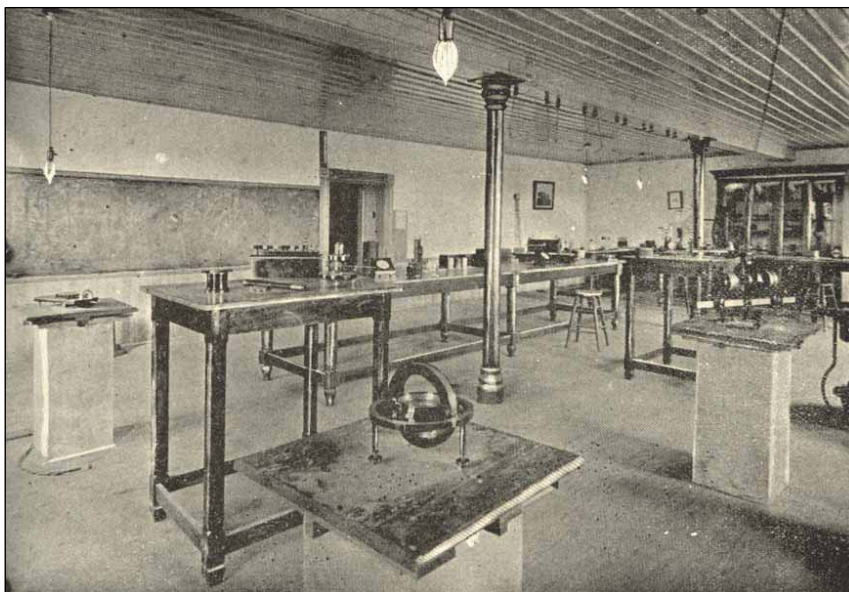
AU – 1890s



1893 – Mechanic Arts Minerals Lab

19

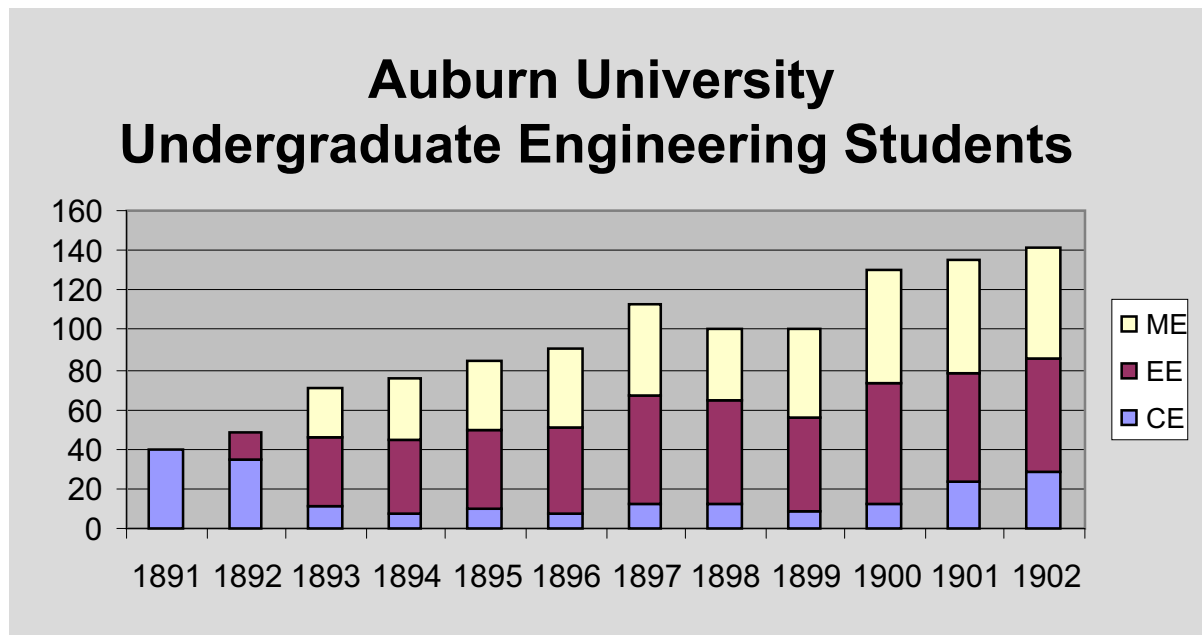
AU – 1890s



1893 – Mechanic Arts Electrical Lab

20

AU – 1890s



Research by Arthur L. Slotkin

21

AU – 1900s

- The Department of Mechanic Arts Split into the Department of Mechanical Engineering and the Department of Electrical Engineering in 1905
- Wilmore was the First Head of Mechanical Engineering
- Wilmore Became Dean of Engineering in 1907 and Served Until 1943

1888

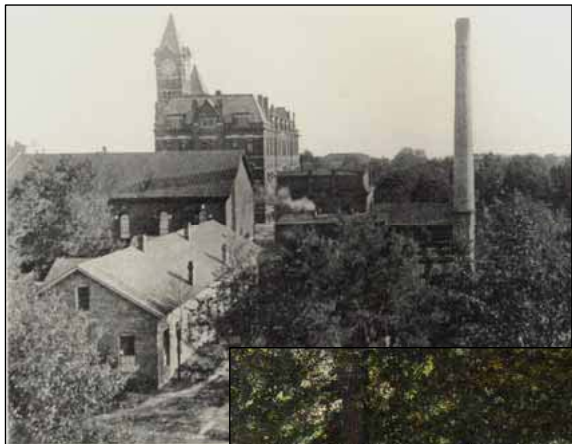


1943

22

AU –1900s

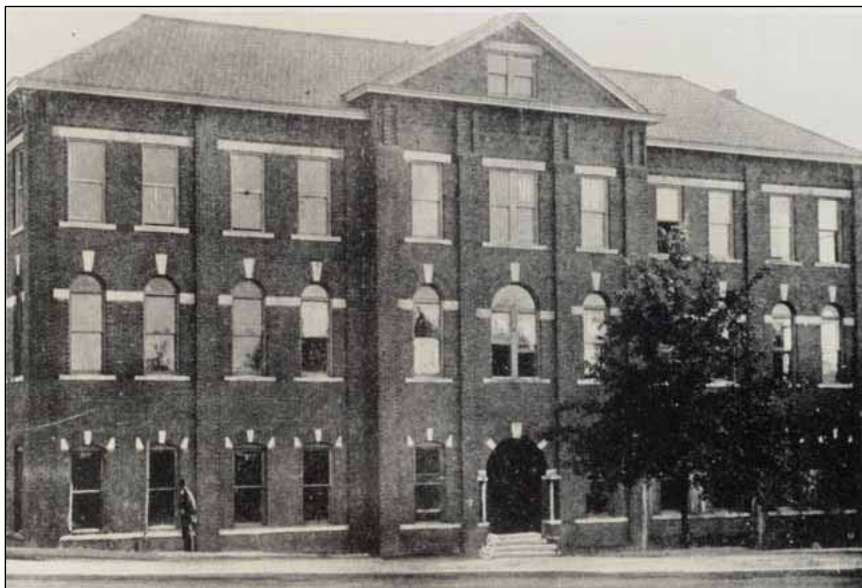
API Campus Scenes – 1906 & 1909



23

AU –1900s

New Engineering Hall – 1905 (Later Broun Hall)



24

AU –1900s

Engineering Hall Renovation – 1910 (Tripled in Size)



25

AU – 1900s

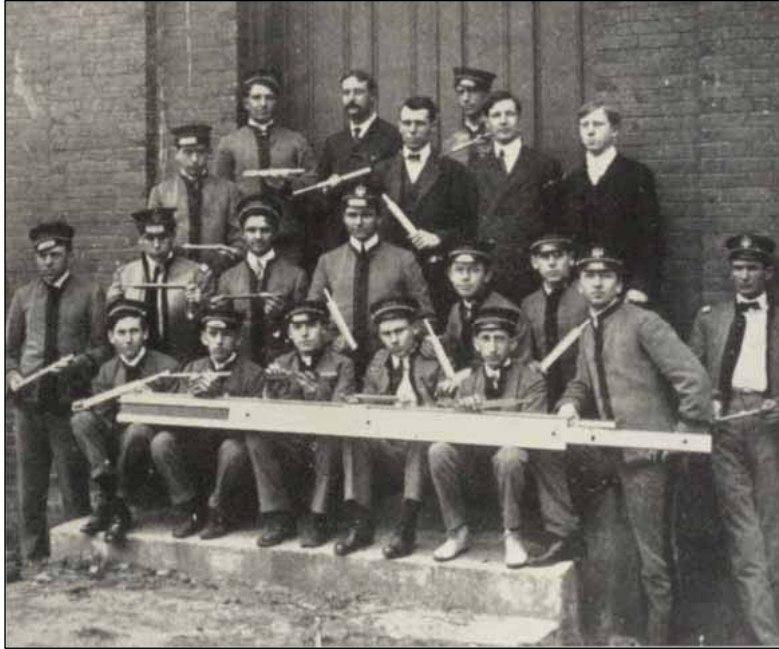
ELECTRICAL AND MECHANICAL STUDENTS JUST BEFORE EE AND ME SPLIT IN 1905



26

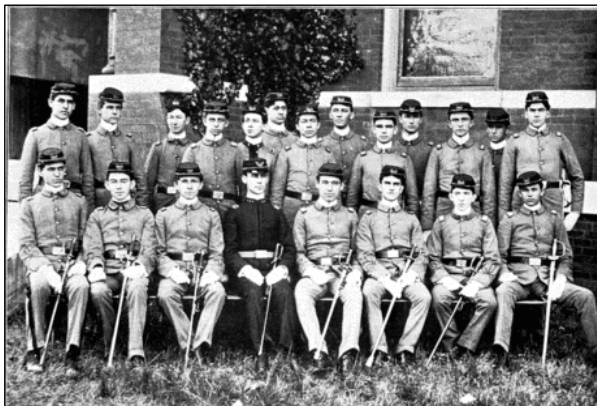
AU – 1900s

ME Slide Rule Brigade - 1906



27

AU –1900s



API Students and Band



28

AU – 1910s

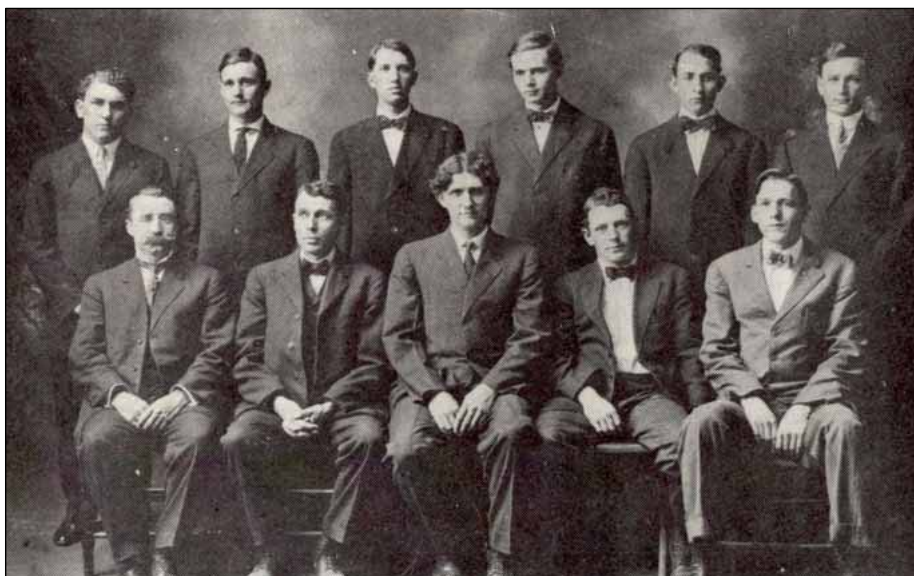


1910 College Street

29

AU – 1910s

Mechanical Engineering Faculty and Students in 1910



Professor M. T. Fullen Dean J. J. Wilmore

M. LOTHROP
G. R. OZLEY
D. G. BOOZER

B. RICHARDSON
J. J. KEYES
J. C. WAITS

30

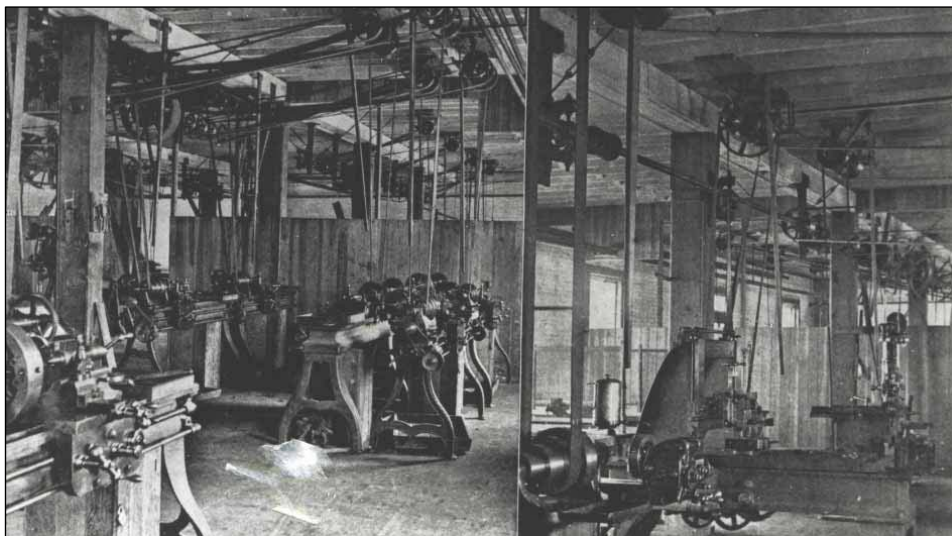
AU – 1910s

Mechanical Engineering Faculty and Students (1910-1919)



31

AU – 1910s



1914 – ME Labs

32

AU – 1910s



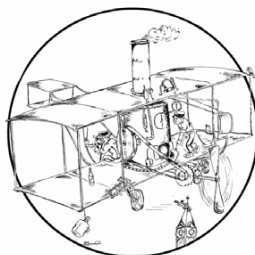
MECHANICAL LABORATORY SCENES.

1914 – ME Labs

33

AU – 1910s

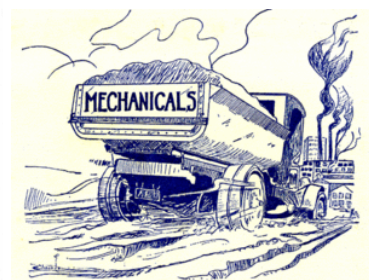
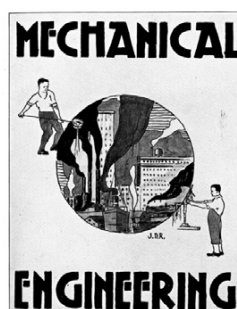
Department Yearbook Drawings



MECHANICAL



MECHANICAL



34

AU – 1920s



Langdon Hall - 1929

35

AU – 1920s



James H. Allen



Warren Crain



Benjamin B. Fuqua



Sidney G. Harper



Ernest W. Harvey



Milton O. Howle



Jerry L. Jimmerson



John S. Kernachan



James F. Maury



Frank S. Morgan



Oscar A. Nelson



Gerald W. Pearson



Edwin H. Sims



Claude Sizemore



Leonard R. Wright

1920
Mechanical
Engineering
Graduates

36

AU – 1920s

1920 Mechanical Engineering Graduates



Senior Class

JAMES HARVEY ALLEN
ANNISTON, ALA.
Mechanical Engineering
Θ X, Spade, Keys, Scarab

"Harvey" is slow, never hurts himself studying, but always gets by. He likes to pass the "buck" to the other fellow, and occasionally he deals in politics. Otherwise he is a pretty good fellow.

Thendara (2, 2, 1); Pan-Hellenic Council (2, 2, 1); Cotillion Club (4, 2, 2, 1), Leader (1); Websterian Literary Society (4); Sergeant (2); Press Club (1); Orange and Blue Board (1); Founders Club (1); Senior Executive Committee (1); A. S. M. E. (1); Lieutenant (1).

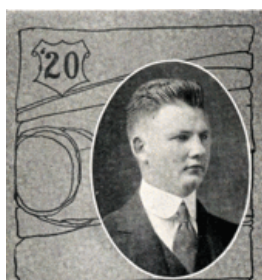


Senior Class

WARREN CRAIN
LAMISON, ALA.
Mechanical Engineering

Oh, ladies, here we have a sphinx who can safely withstand all your charms. "Wormy" has never been known to cast a glance at any fair damsel in all his college career; but who knows what lurks in the background of his native city?

Class Basketball (4, 2, 2); Distinction (2); Corporal (2); First Sergeant (1); A. S. M. E. (1); Founders Club (1).



Senior Class

JERRY LESLIE JIMMERSON
OPELIKA, ALA.
Mechanical Engineering

"Jerry" is a wonderful exponent of the Mech. Class, and he has discovered a new method of perpetual motion. He seems perfectly contented with life and other things and we wouldn't be surprised if he would run for the Presidency of Mexico or Chile.

No-Name Literary Society (3); Class Football (1); A. S. M. E. (1); Founders Club (1).



JAMES FONTAINE MAURY, JR.
MOBILE, ALA.
Mechanical Engineering
Α Τ Ω, Upsilon Delta, Scarab

"Jim" is a shining star of the social world, and he believes in having a good time. He thinks himself selfish not to be on the outlook for ladies, and they think him foolish to do so. "Jim" has never been known to study. However, if he passes Calculus we think he will be able to get a "dip."

Cotillion Club (4, 2, 2, 1); Pan-Hellenic Council (2, 2, 1); Thendara (2, 1); Shavetail Club (2); Instructor R. O. T. C. (2, 1); Founders Club (1).

37

AU – 1920s

1920 Mechanical Engineering Graduates

Senior Class

OSCAR ALBIN NELSON
BIRMINGHAM, ALA.
Mechanical Engineering

"Swede" is one of those good-natured, vociferous Mechanicals who spends three-fourths of his time sleeping. He is heard more often than he is seen, and he has proven to be a clever impersonator of Machine Design. "Swede" is very fond of peanuts and you may gain his friendship by feeding him these delicious morsels.

Distinction (4); Crack Company (4); Wirt Literary Society (4, 3); Vice-President (4); Secretary (2); Auburn Chapter Alpha Phi Epsilon (2, 3); Cotillion Club (3, 2, 1); Corporal (2); Sergeant (2); Lieutenant (1); Founders Club (1); Advertising Manager Auburn Players (1); A. S. M. E. (1).



MILTON OLIVER HOWLE
BIRMINGHAM, ALA.
Mechanical Engineering
Τ Κ Φ, Φ Κ Φ, Α Φ Ε

"Moh" miraculously escaped from the Magic City zoo four years ago, and the keeper has not been able to locate him since then. He is well versed in the arts of youth and he can often be heard uttering his sarcastic wit. He owns a harem in every State of the Union and we hope to see him settle down in the near future and become a useful citizen.

Distinction (4, 2); Highest Distinction (2); Wirt Literary Society (4, 3, 2, 1), Orator (4), Treasurer (2), President (2), Vice-President (1); Lovelace Literary Society (4, 3); Dramatic Club (4, 1); Y. M. C. A. (4, 2, 1), Cabinet (2, 1), Handbook Manager (2, 1); Declamation Contest (4); Class Orator (2); Class Basketball (2, 2); Class Track Team (3, 2); Glee Club (3, 1); Inter-collegiate Debater (2); Wirt Debutor's Medal (2); Debating Council (2, 1); Alpha Phi Epsilon (2, 1), General Secretary-Treasurer (1); Class Football (2, 1); Shavetail Club (2); Instructor R. O. T. C. (2, 1); Press Club (2, 1), Vice-President (1); A. S. M. E. Chairman (1); Instructor Mechanic Arts (1); Des Moines Delegate (1); Editor-in-Chief Glomerata (1); Cotillion Club (1); Founders Club (1).



EDWIN HUSON SIMS
COLUMBUS, GA.
Mechanical Engineering
Κ Α

"Ed" is especially interested in dreaming and talking about women, and he seems satisfied with his success in both. He has a great desire to start a free lunch counter for those college students who get up too late for breakfast every morning. "Ed" has never been known to arrive at any class before fifteen minutes after the hour.

Cotillion Club (2, 2, 1); No-Name Literary Society (2); Corporal (3); Thendara (2, 1); Sergeant R. A. T. C. (2); Ex-military (1); A. S. M. E. (1).



38

AU – 1920s

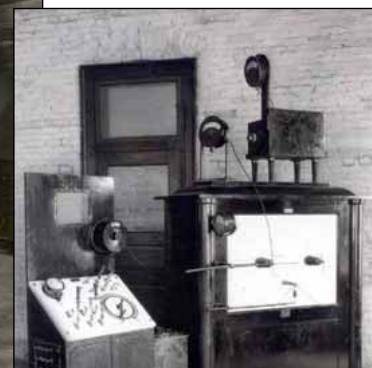
Engineering Seniors (1921)



39

AU – 1920s

Mechanical Engineering Engines Class (1926)



1925 X-Ray Equipment

40

AU – 1920s

Mechanical Engineering Engines Class (1926)



41

AU – 1920s

Mechanical Engineering Shop (1925)



42

AU – 1920s

A. S. M. E.

OFFICERS

R. L. LOCKE *Chairman*
H. F. SCHWEKENDIEK *Vice-Chairman*
J. B. WILLIAMS *Secretary*

FACULTY MEMBERS

C. R. HIXON W. D. GARMAN
J. J. WILMORE M. T. FULLAN

STUDENT MEMBERS

P. C. AUSLEY	W. C. HUGHES
R. J. BAREFIELD	F. P. JONES
C. B. BURGOYNE	S. C. JOHNSON
T. C. BUCKSHAW	G. R. LAWSON
L. E. BELL	M. MIDGETTE
W. P. CAINE	G. A. PRESTON
B. G. CAMPBELL	E. L. STEELE
E. F. CAMPBELL	R. C. TRAMMEL
W. H. FRANCIS	A. L. TAYLOR
J. C. FLEMING	C. H. TURK
W. P. FULLER	T. B. WILDER
J. I. GREENHILL	F. J. WALLACE
C. E. SHAFFER	

ASME



1922



1925

43

AU – 1920s

The College of Engineering



JOHN JENKINS WILMORE

M.E.

Dean

The civilization of today depends more and more on the work of the engineer. He is largely responsible for the materials, the machinery and the processes of manufacturing, and his activities in promoting the general welfare are widely recognized.

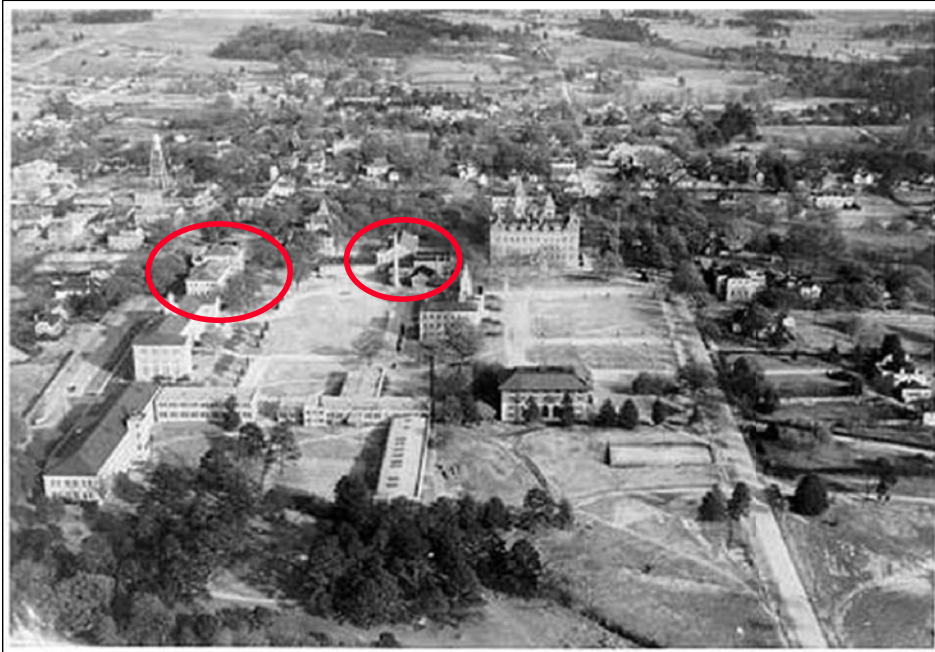
This is the oldest College of Engineering in the South and the high efficiency of its instruction is unquestioned. The services of its graduates are in demand in every section of the country, and their record of professional accomplishment is one of which the friends of Auburn may well be proud.



From the 1929 Glom

44

AU – 1930s



Late 1930s Aerial Shot of Campus

45

AU – 1930s

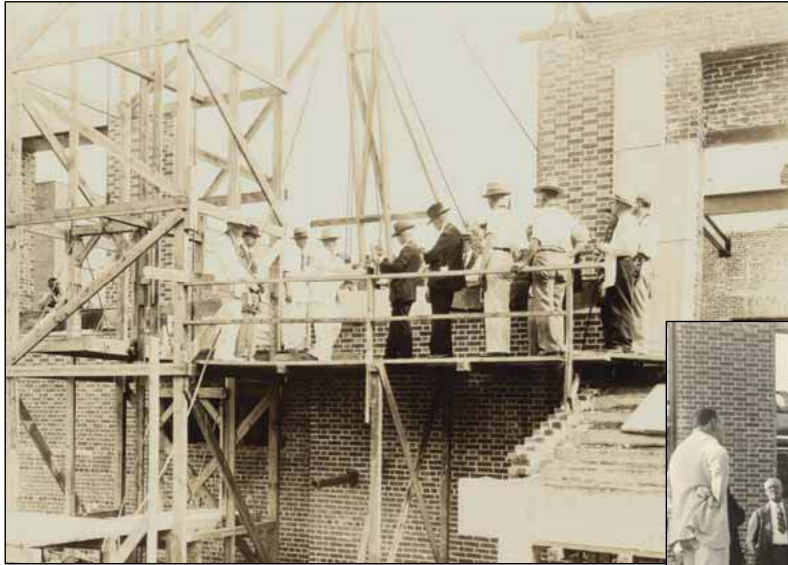


ENGINEERING BUILDING

(Broun Hall)

46

AU – 1930s



1929-1930
Ross Hall
Construction



47

AU – 1930s



1929-1930
Ross Hall
Construction



48

AU – 1930s

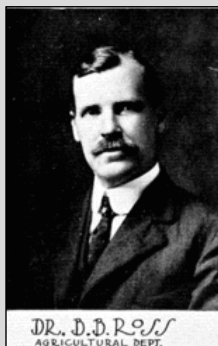


BENNETT BATTLE ROSS

1864-1930

Bennett Battle Ross—acting president, dean and professor. Auburn 1881, M.A. (honorary), 1886, with further training at German universities and the University of Chicago. After six years each as assistant chemist at Auburn and professor of chemistry at Louisiana State University, he returned as professor of general and agricultural chemistry and state chemist, which positions he held until his death. Concurrently, he served as dean of agricultural sciences, 1911-22, dean of chemistry and pharmacy, 1922-30, and in both 1920 and 1925 as acting president. Honorary degrees: doctor of laws, old Southern and Emory Universities. Methodist, Rotarian, Town Councilman. Letitia Dowdell Ross was his wife.

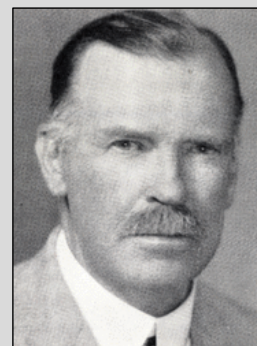
Ross Hall Namesake



DR. D.D. ROSS
AGRICULTURAL DEPT.



BENNETT BATTLE ROSS, Dean



BENNET BATTLE ROSS received his B. S. degree from the Alabama Polytechnic Institute in 1881 and his M. S. degree in 1886. He spent one year abroad in the Universities of Gottingen and Berlin. Upon his return he held the Chair of Chemistry at L. S. U. for six years and then returned to his Alma Mater to become head of the Chemistry Department, in which capacity he is still serving. In 1917 the Southern University conferred the degree of LL. D. upon him. During the World War, Dr. Ross rendered valuable services to his country. He was a member of the State Board of Industrial Preparedness and Associate Member of the Naval Consulting Board of the United States.

49

AU – 1930s

Ross Hall Construction History

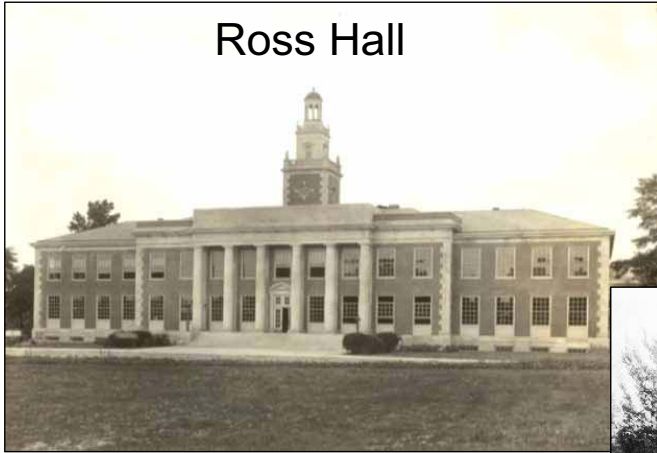
On Tuesday, April 30, 1929, the ground breaking for the Ross Chemistry Laboratory was begun by Dr. Knapp and professor B. B. Ross. The cornerstone was laid on August 16, 1929; Ross was occupied in March, 1930; and dedication exercises were held at 5 p.m. on May 19, 1930. This \$224,974.00 building was designed by Warren, Knight, and Davis and constructed by Frost Construction Company, Birmingham, Alabama. The March issue of "Alumnews" that year described the building: [Ross Hall is a] Modern building of brick, stone, tile, and concrete, plus a small amount of wood. It is a fireproof building in Georgian style, three stories, containing 67 rooms. The three floors and basement total 42,000 sq. ft. Of the 67 rooms, 22 are small rooms for individual work. The floors are mastic tile and all working surfaces of laboratory desks are of alverine stone. Locks and other hardware are of solid brass. Seventeen fans are included to remove fumes. For repair, all pipes are exposed.

The building was named for Dr. B. B. Ross, who died April 4, 1930, just before the building was completed. The first use of the building was to house the body of the distinguished chemist whose name it bears, while hundreds of friends came to honor him. His body was brought from Florida to Auburn and at noon on Sunday, April 6th, the casket was moved to the Ross Chemistry Laboratory.

50

AU – 1930s

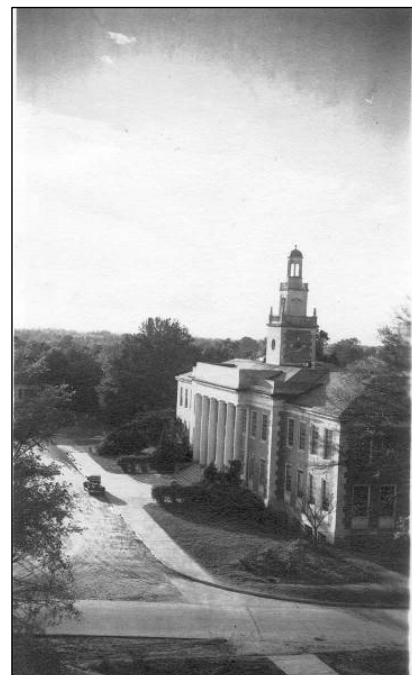
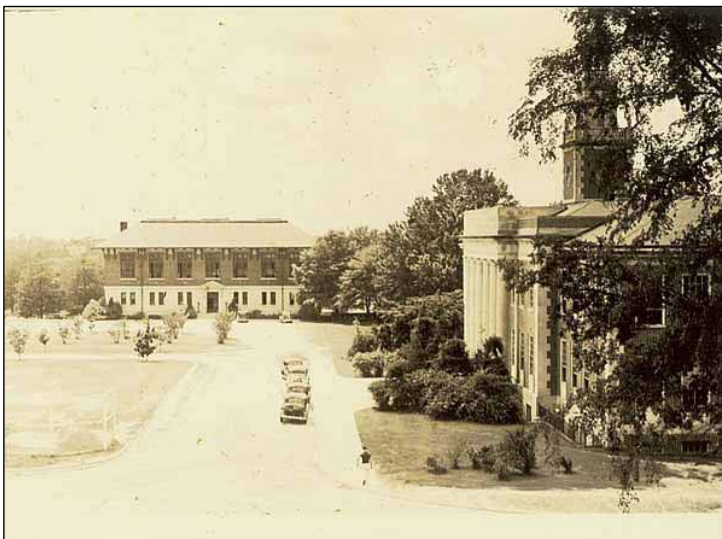
Ross Hall



51

AU – 1930s

Ross Hall



52

AU – 1930s

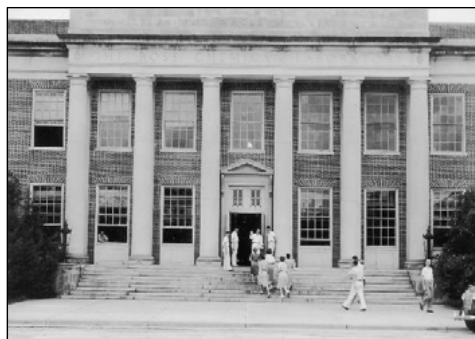
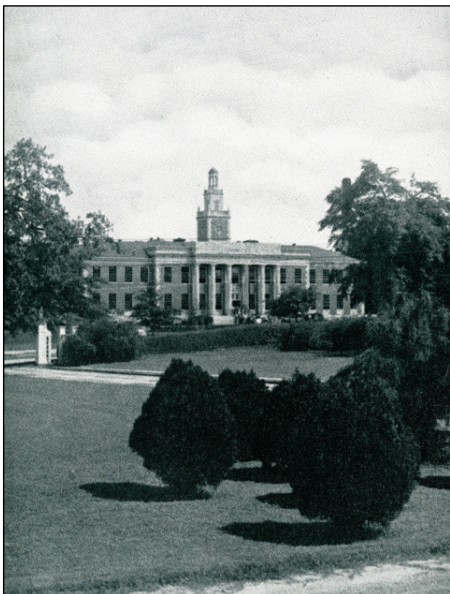
Ross Hall



53

AU – 1930s

Ross Hall



54

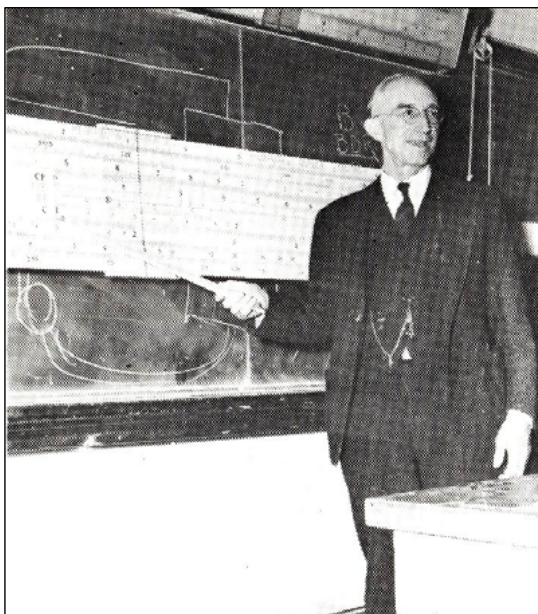
AU – 1930s

API Military Band



55

AU – 1930s



Charles "Charley" Hixon, Head of ME from 1921-1954

56

AU – 1930s

ME Seniors (1936)



57

AU – 1930s

ME Structures Lab - 1937



58

AU – 1930s

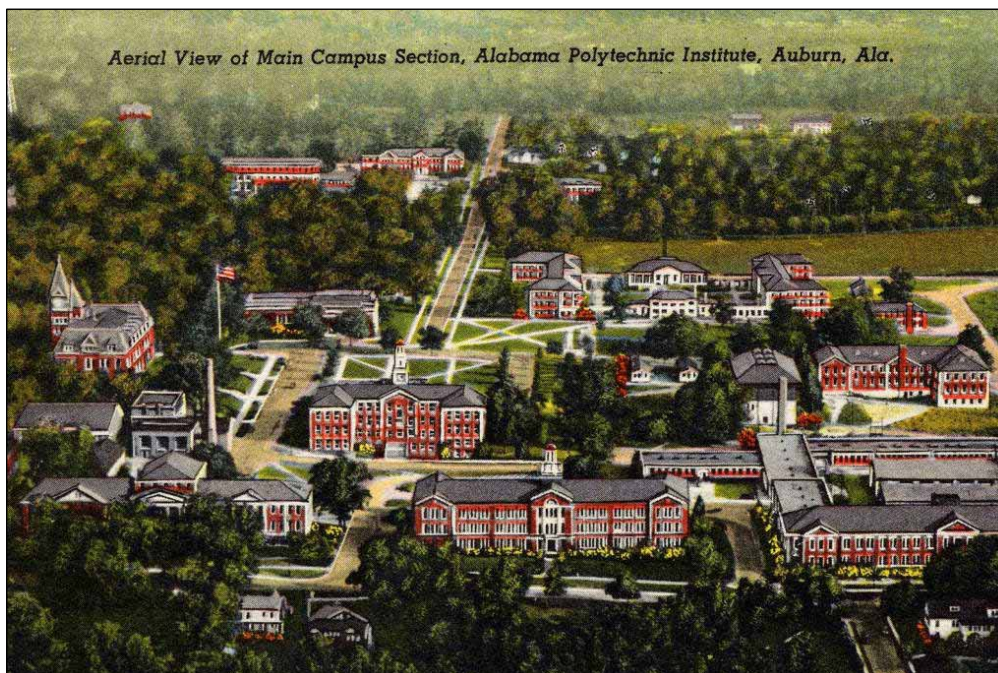
ME Foundry Class - 1939



59

AU – 1940s

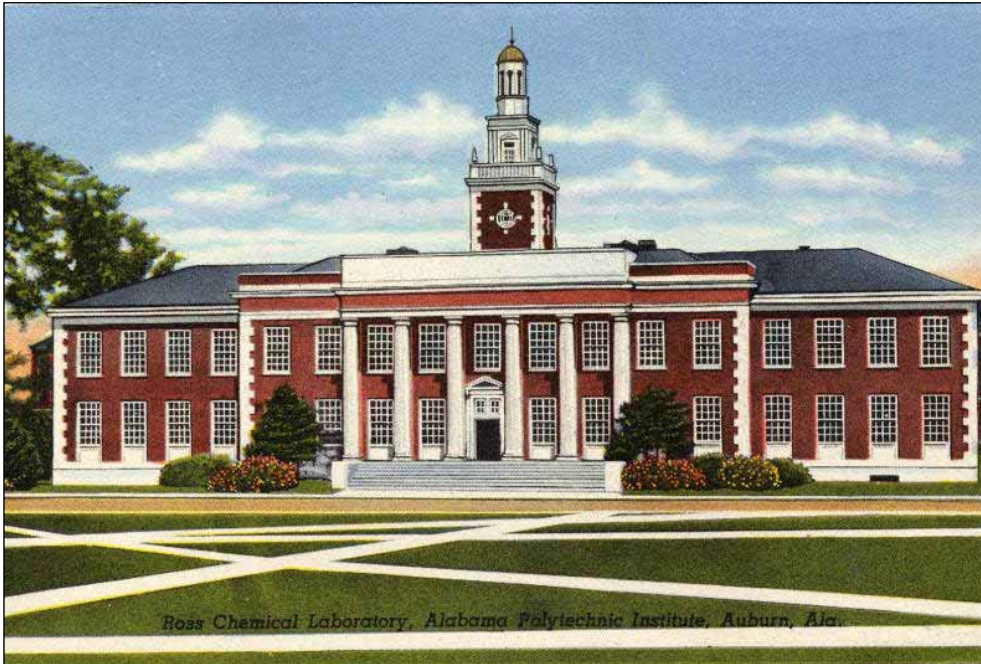
API Campus - 1948



60

AU – 1940s

Ross Hall - 1948



61

AU – 1940s

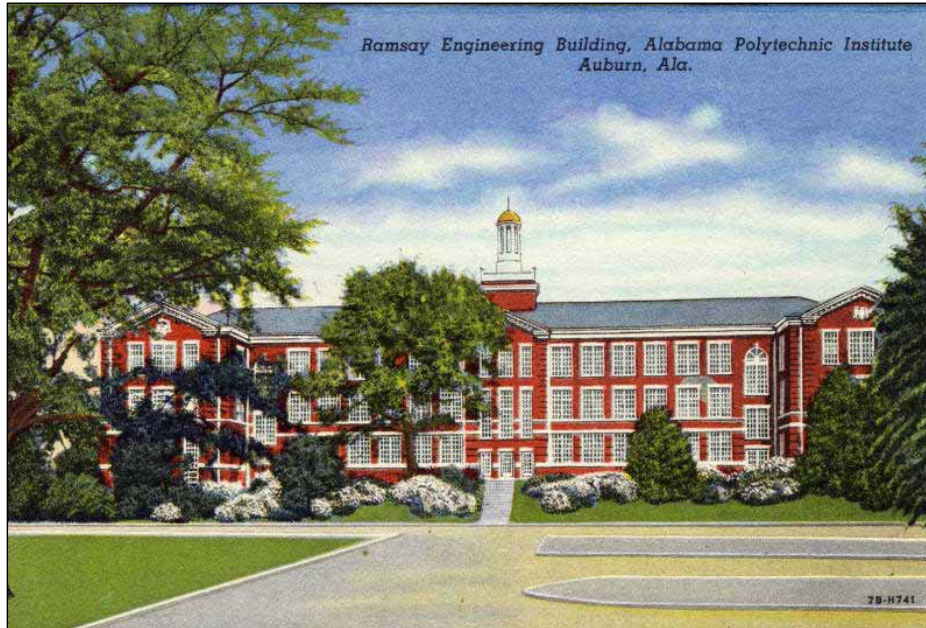
Textile Engineering - 1948



62

AU – 1940s

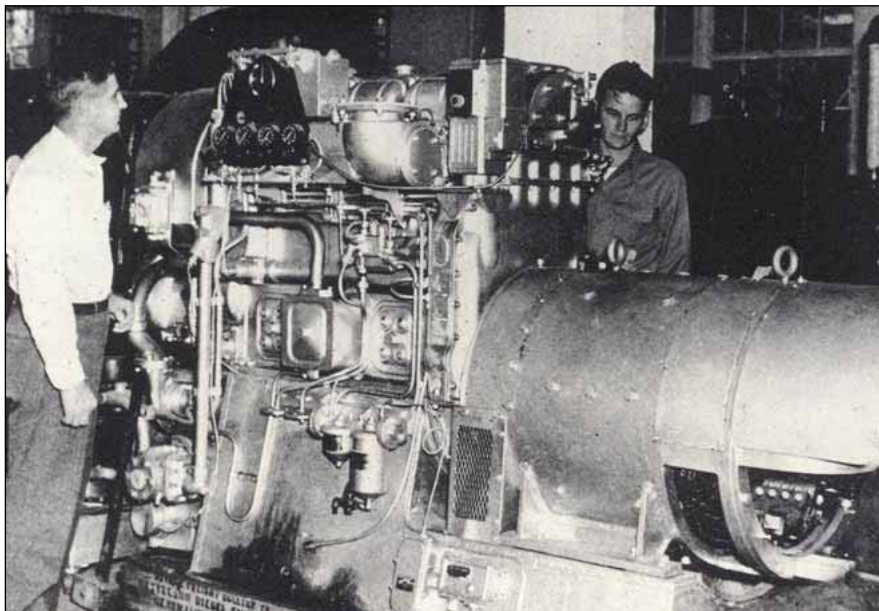
Ramsay Hall - 1948



63

AU – 1940s

ME Engine Lab (Ramsay Hall) - 1948



64

AU – 1940s



Dances at Ross Hall



65

AU – 1940s

Auburn Pi Tau Sigma Banquet (1946)



66

AU – 1940s

ASME Meeting (1948)



In 1948 the Auburn ASME won The Auburn Engineer's subscription drive. Members of ASME chose to invest their winnings in a social event at Chewacla. A notice in The Auburn Engineer accompanying this photo of the event announced that ASME had "appointed an armed guard for refreshments."

67

AU – 1940s

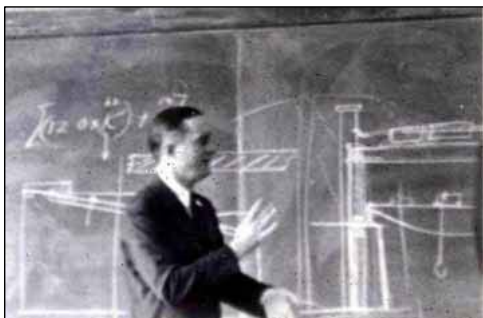


Wilmore Retires as Dean in 1946

Wilmore Labs Built 1948-1951

68

AU – 1940s

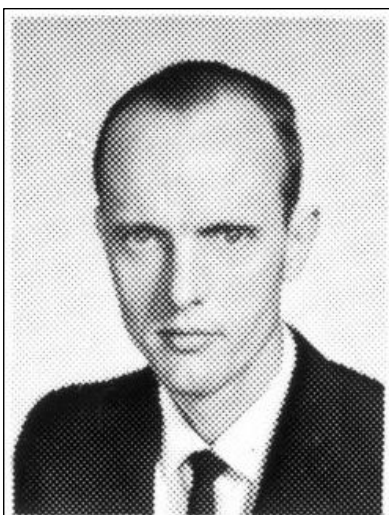


Professor John C. McKinnon
ME Faculty from 1924-1962

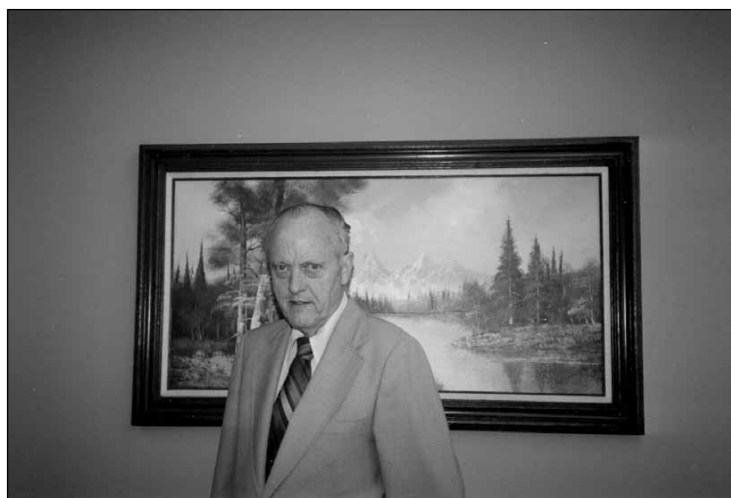


69

AU – 1940s



Jones, Edward O., Jr.
1946-



70

AU – 1940s



Every story I told in class
was 100% true.

John L. Scarborough

ME Faculty, 1947-1990

71

AU – 1940s

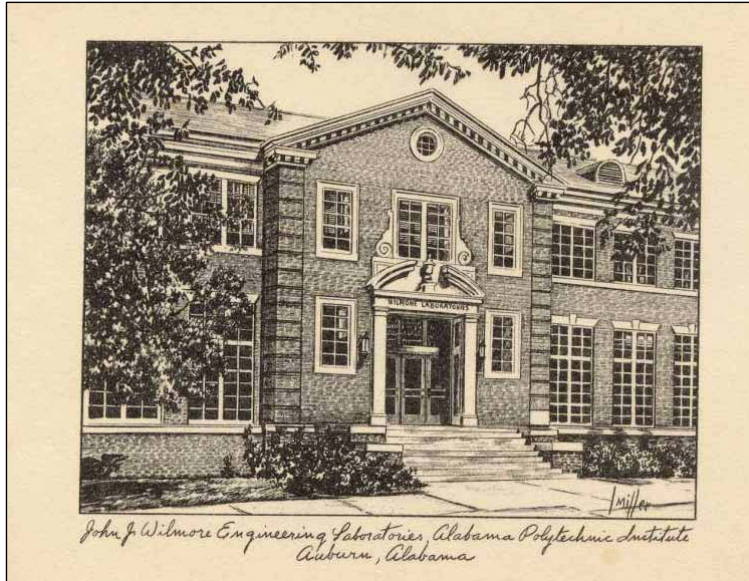
Construction of Wilmore Hall: 1948-1951



72

AU – 1950s

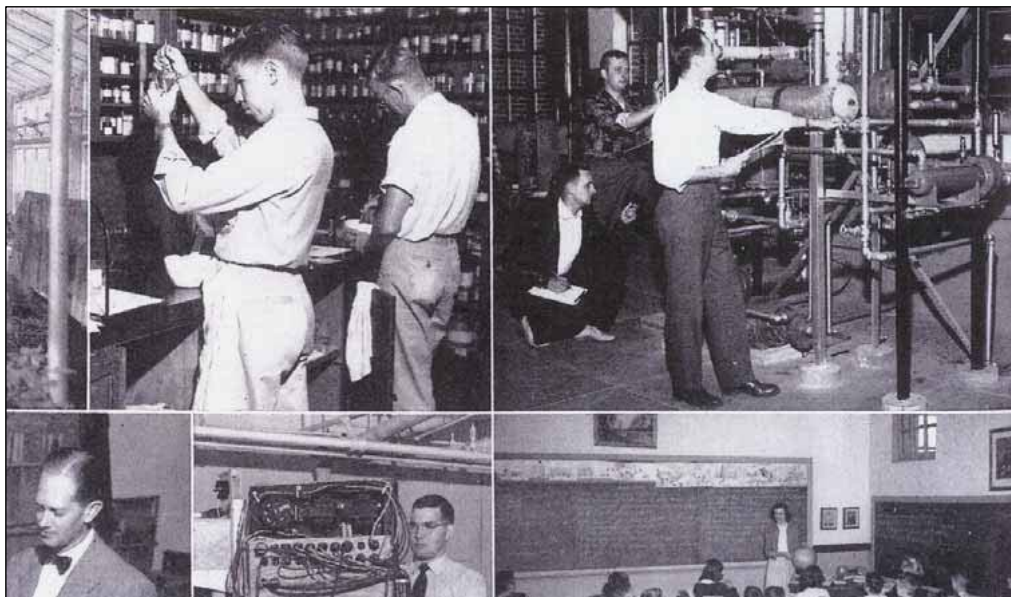
New Wilmore Hall - 1952



73

AU – 1950s

New Wilmore Hall - 1952



74

AU – 1950s

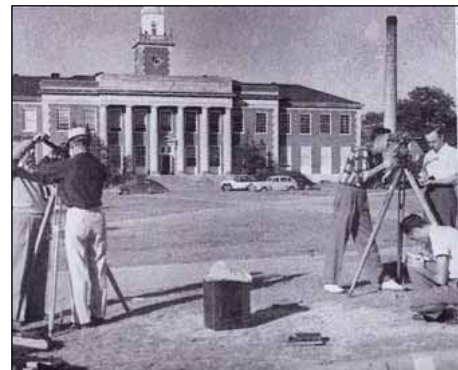
New Wilmore Hall - 1952



75

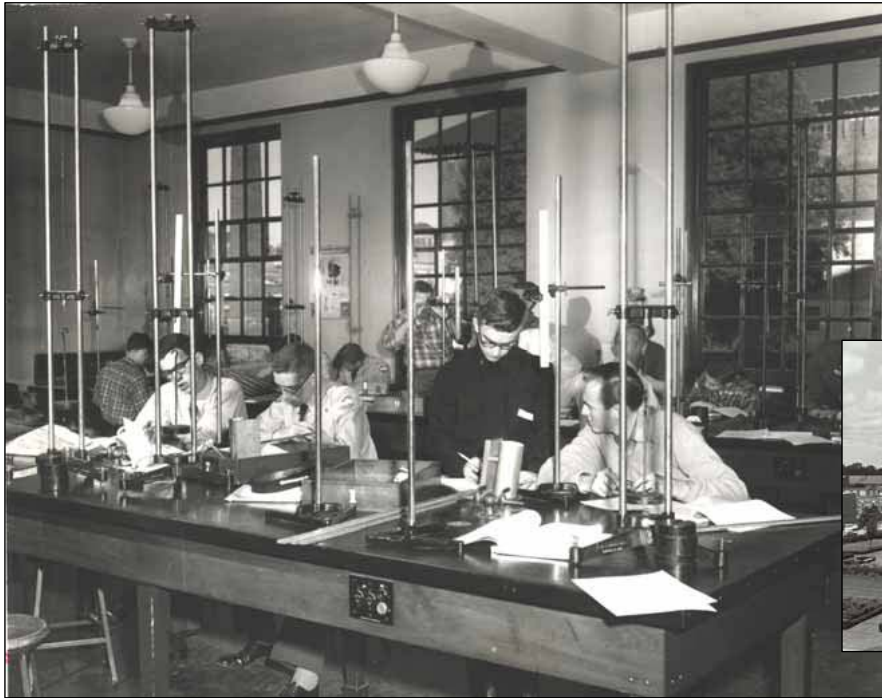
AU – 1950s

Ross Hall – 1950, 1952



76

AU – 1950s



Ross (1957)

Measuring Modulus of Elasticity in Ross Hall

77

AU – 1950s

Rear of Ramsay Hall with New Wilmore Hall



78

AU – 1960s



Donald M. Vestal
ME Department Head
1959-1976



79

AU – 1960s

Doctorate In Mechanical Engineering To Be Initiated Here In Winter, 62

The Graduate School of Auburn University is to expand its engineering curricula to include a doctoral program in the department of mechanical engineering. Graduate Dean W. Vann Parker reports that applications now are being accepted and work leading to the degree will be offered for the first time in the winter quarter of 1962.

"The announcement of the inception of the doctoral program in mechanical engineering is most pleasing to me," states Auburn President Ralph B. Draughon. "It has required the toil and dedication of countless Auburn men and supporters. Now we must turn our energies toward approval of doctoral programs in other areas of engineering.

"This is significant for Auburn and for the state. If Alabama is to share in the benefits of recent scientific achievements, we must attract many new industries. To do this we must create the sources of human raw material that they require. We must continue to expand our technical educational and research facilities. It has been demonstrated that industries locate near the better centers of learning."

By initiating the program, Auburn joins Georgia Tech and Tu-

lane as Deep South institutions offering the doctor of philosophy degree in mechanical engineering.

Engineering Dean Fred H. Pumphrey explains, "Southern universities need to act on a real need in the engineering education field . . . Many promising graduates of our engineering schools have failed to pursue their education past the B. S. or M.S. degree level because of the lack of advanced engineering educational facilities in this area. Many more of these promising students are sought out by schools in other sections of the country and invited to participate in their active graduate programs . . . A great percentage of these people who leave the south for advanced training do not return after this training has been completed. There is an increasing demand for highly trained engineers all over this country. At the present time we here in the South are forced to procure our share from schools in other sections of the country. With our new doctoral program in mechanical engineering, we can help follow the obvious course and produce our own."

In preparing for the program, the department has acquired over \$125,000 in research equipment.

Its research, which includes seven Engineering Experiment Station projects, is expanding. Additional staff members have been procured, many of them holding doctoral degrees. Three other professors now are studying for doctorates at Minnesota, Carnegie Tech and Oklahoma State. The new library, now under construction, is expected to further implement the program.

Head Professor Donald Vestal lists the following areas to be emphasized in the doctoral study: engineering mechanics, thermoscience and energy conversion, and metallurgical engineering.



80

MECHANICAL ENGINEERING FACULTY and STAFF

1960-1970



Pomeroy, Paul C.
 Dean of Engineering 1955-60
 Dean 1961-69

Orr, C. Ward
 Asst. Prof. 1955-56
 Asst. Prof. 1956-57
 Asst. Prof. 1957-58
 Asst. Prof. 1958-59
 Asst. Prof. 1959-60
 Asst. Prof. 1960-61
 Asst. Prof. 1961-62
 Asst. Prof. 1962-63
 Asst. Prof. 1963-64
 Asst. Prof. 1964-65
 Asst. Prof. 1965-66
 Asst. Prof. 1966-67
 Asst. Prof. 1967-68
 Asst. Prof. 1968-69
 Asst. Prof. 1969-70

Russell, Earl
 Assistant Dean of Engineering
 1960-1961

Nelson, Charles E.
 Asst. Prof. 1955-56
 Asst. Prof. 1956-57
 Asst. Prof. 1957-58
 Asst. Prof. 1958-59
 Asst. Prof. 1959-60
 Asst. Prof. 1960-61
 Asst. Prof. 1961-62
 Asst. Prof. 1962-63
 Asst. Prof. 1963-64
 Asst. Prof. 1964-65
 Asst. Prof. 1965-66
 Asst. Prof. 1966-67
 Asst. Prof. 1967-68
 Asst. Prof. 1968-69
 Asst. Prof. 1969-70

Vestal, Donald M., Jr.
 Professor and Head M.E.
 1970-



Barbin, Allen R.
 1961-1962

Russell, William H.
 1962-1963

Conley, Irvin D.
 1963-1964

Dyer, David F.
 1964-1965

Goodling, John S.
 1965-1966

Julian, Warren A.
 1966-1967

Jones, Edward O., Jr.
 1967-1968

Maples, Glenn
 1968-1969

Scarborough, John L.
 1969-1970



Russell, Earl
 1961-1962

Nelson, Charles E.
 1962-1963

Orr, C. Ward
 1963-1964

Pomeroy, Paul C.
 1964-1965

Russell, Earl
 1965-1966

Nelson, Charles E.
 1966-1967

Orr, C. Ward
 1967-1968

Pomeroy, Paul C.
 1968-1969

Russell, Earl
 1969-1970



Barbin, Allen R.
 1961-1962

Russell, William H.
 1962-1963

Conley, Irvin D.
 1963-1964

Dyer, David F.
 1964-1965

Goodling, John S.
 1965-1966

Julian, Warren A.
 1966-1967

Jones, Edward O., Jr.
 1967-1968

Maples, Glenn
 1968-1969

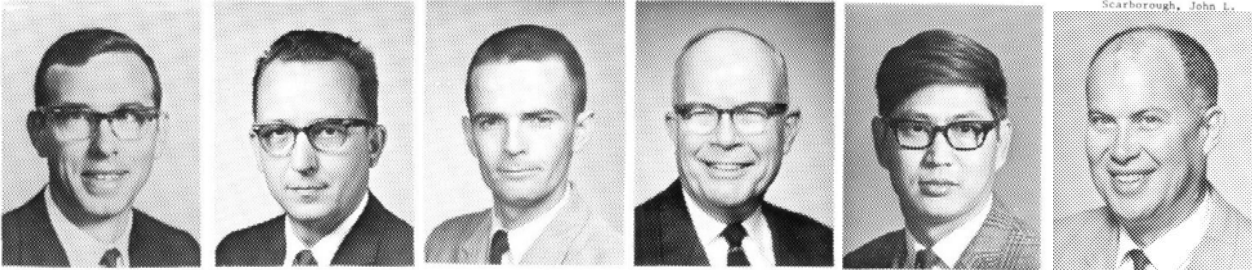
Scarborough, John L.
 1969-1970



Barbin, Allen R.
 Russell, William H.
 Conley, Irvin D.
 Dyer, David F.



Goodling, John S.
 Julian, Warren A.
 Jones, Edward O., Jr.
 Maples, Glenn
 Scarborough, John L.

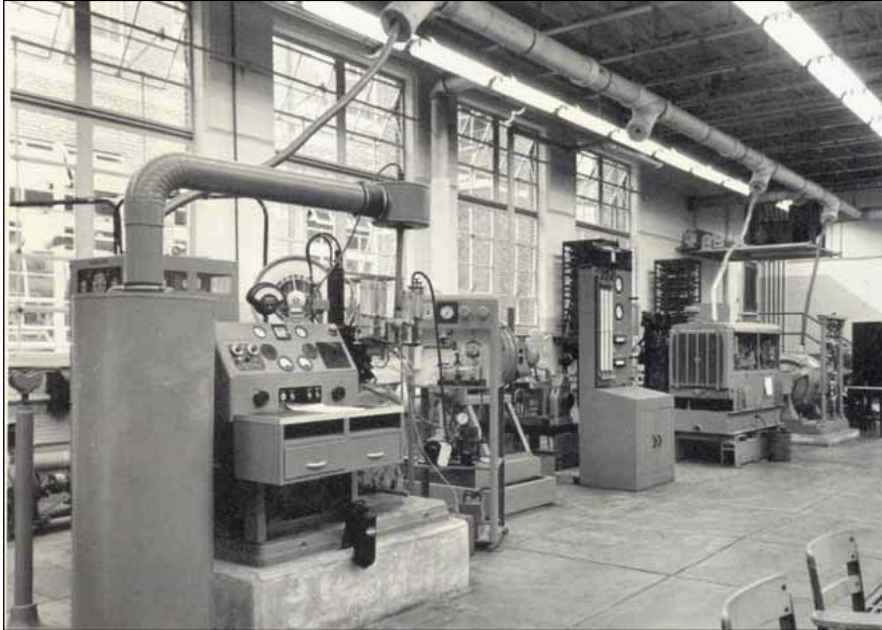


Reece, Joe W.
 Shaw, Winfred A.
 Swinson, Weldon Frank
 Vestal, Donald M., Jr.
 Yu, James C. M.
 Smith, Floyd S.



AU – 1960s

Wilmore Hall Engines Lab - 1962



83

AU – 1960s

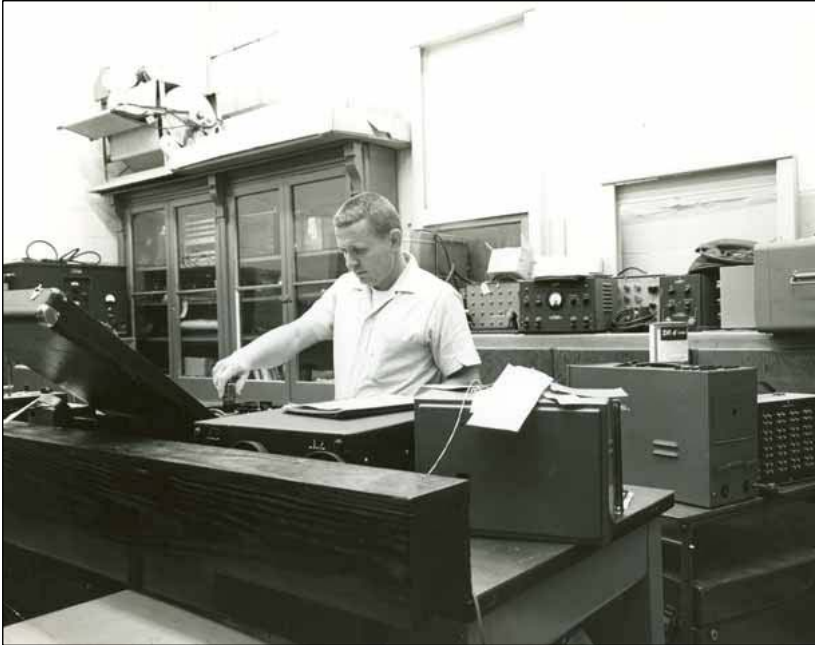
Wilmore Hall Mechanical Testing Lab - 1962



84

AU – 1960s

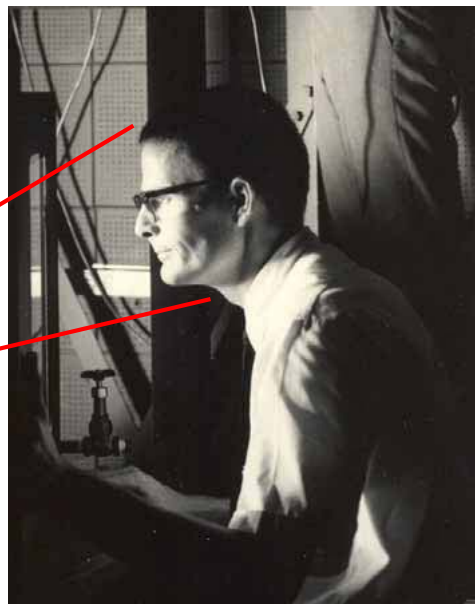
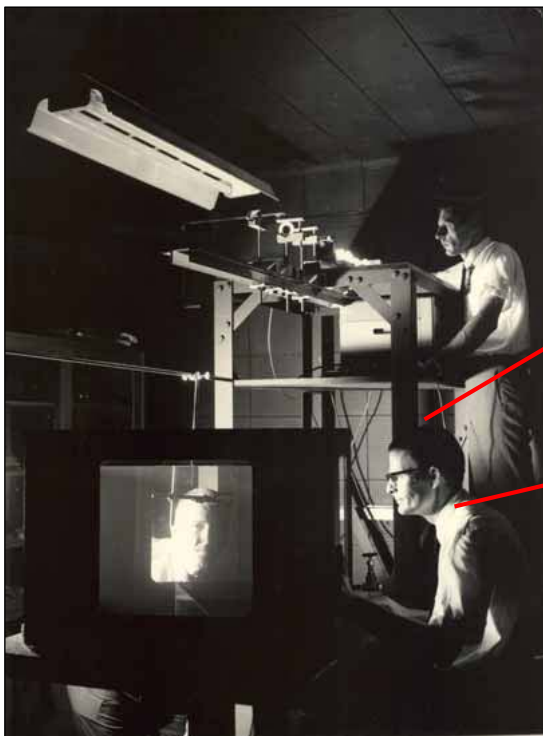
ME Electronics Shop



85

AU – 1960s

Photoelasticity Laboratory



86

AU – 1960s



ME Students



87

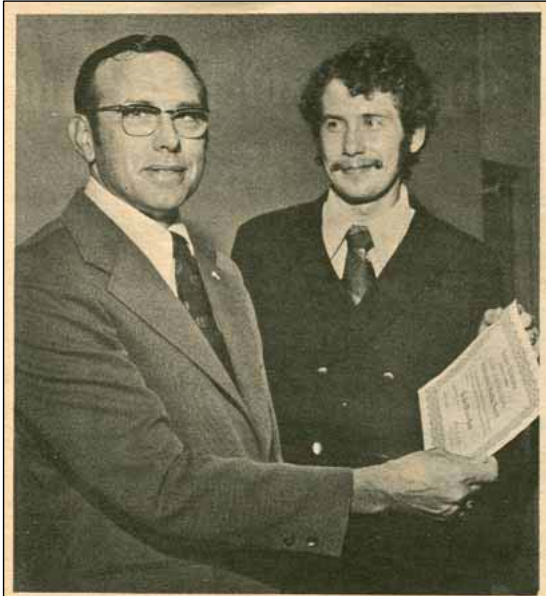
AU – 1970s

The “Blue Machine” Room

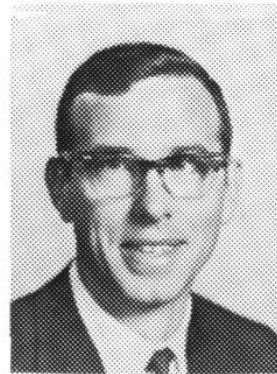


88

AU – 1970s



OUTSTANDING PROFESSOR — Students in the School of Engineering selected Dr. Joe W. Reece, associate professor of mechanical engineering, as their outstanding professor. Dr. Reece, left, received a citation from Steve Budenstein at the recent Engineers' Honors Banquet.



Reece, Joe W.
1964-

1973

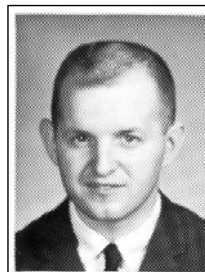
89

AU – 1970s



1979

ROARING RETROFIT—Dr. David Dyer sits by a retrofit fireplace designed to circulate air around the fire box. It will heat a modern three-bedroom house and will fit into an existing masonry fireplace.



90

AU – 1970s



RECOGNITION FOR RESEARCH—Dr. David F. Dyer, left, mechanical engineering professor at Auburn University, has been selected for the ASME Research Recognition Award by other faculty members at Auburn. Making the presentation was Engineering Dean J. Grady Cox.

Dyer Named For Research Award

Dr. David F. Dyer, assistant professor of mechanical engineering, has been awarded the Research Recognition Award at Auburn University for the year.

Selection for the award, presented by the Southeastern Section of the American Society for Engineering Education, is by the members of the school faculty.

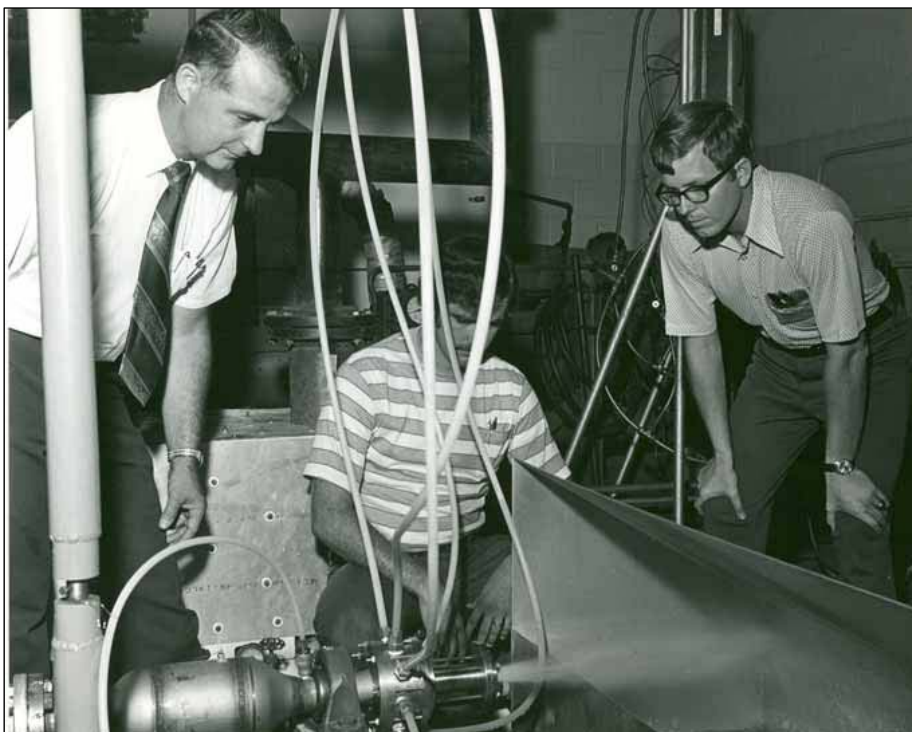
The paper submitted by Dyer to the faculty involved dehydration of meats and the mechanization involved in the process. It was co-authored by Dr. J. Edward Sunderland of Georgia Tech where the study was the basis for Dyer's doctoral dissertation.

Dyer's investigation involved dehydrating meat.



91

AU – 1970s



1973

92

AU – 1970s



93

AU – 1970s



1973

94

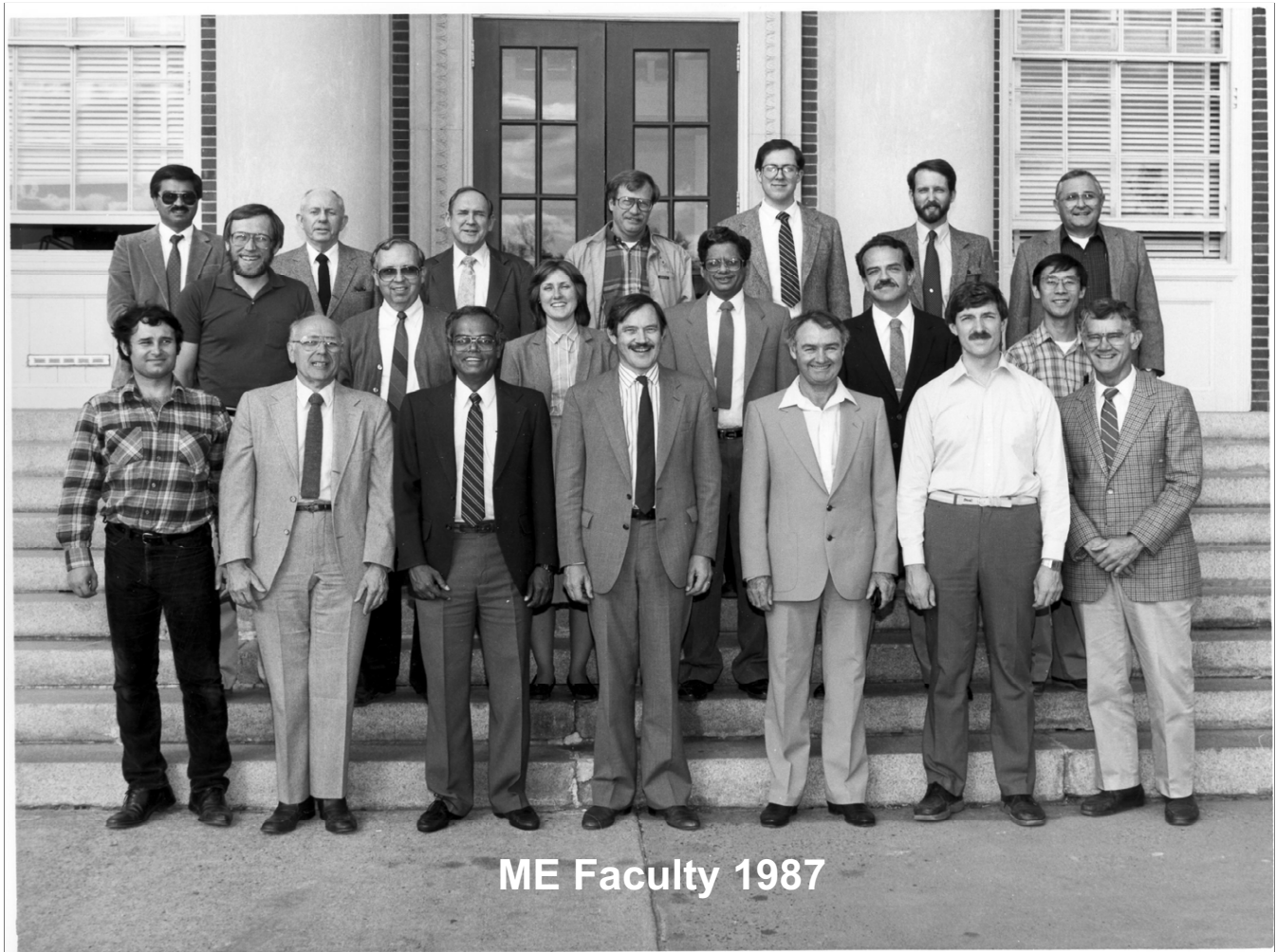
AU – 1980s



Ross Hall 1985

95





ME Faculty 1987

AU – 1980s



First ME PC Lab in Wilmore (1984)



PCs Move to Shop Building 308 in 1985

AU – 1980s



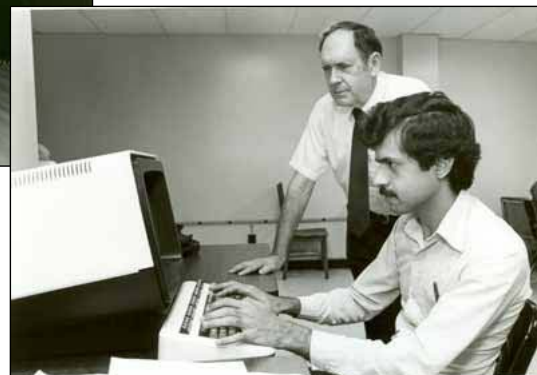
The Harris Computer and Man with Beard

99

AU – 1980s



The “Data General”



100

AU – 1980s



101

AU – 1980s



102

AU – 1980s



103

AU – 1980s



104

AU – 1980s



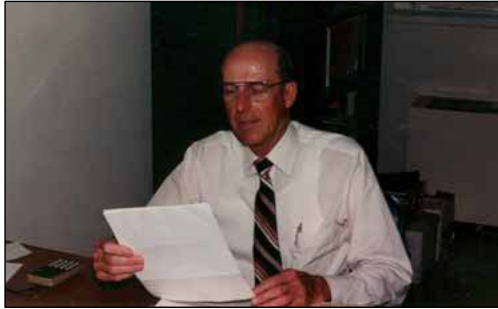
105

AU – 1980s



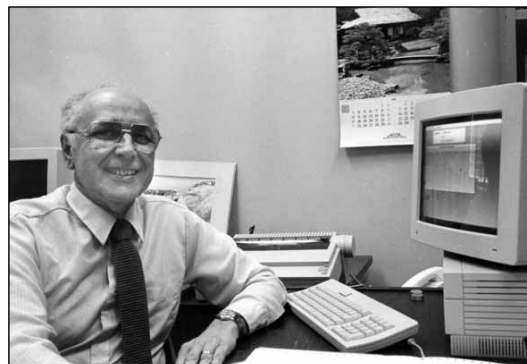
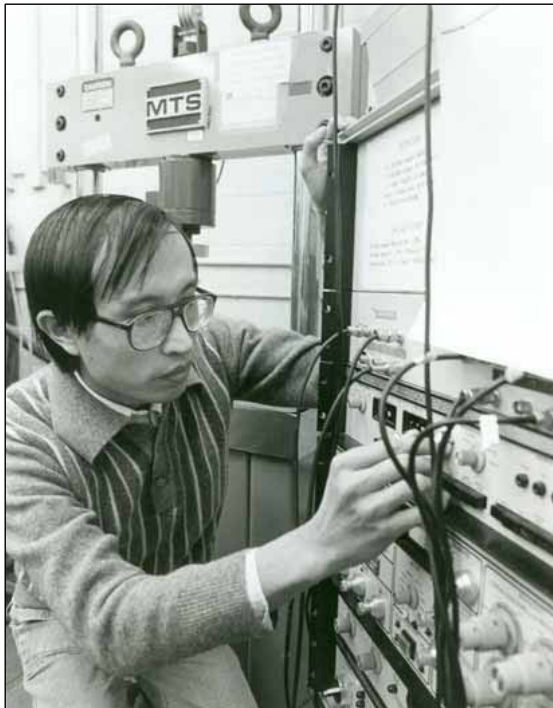
106

AU – 1980s



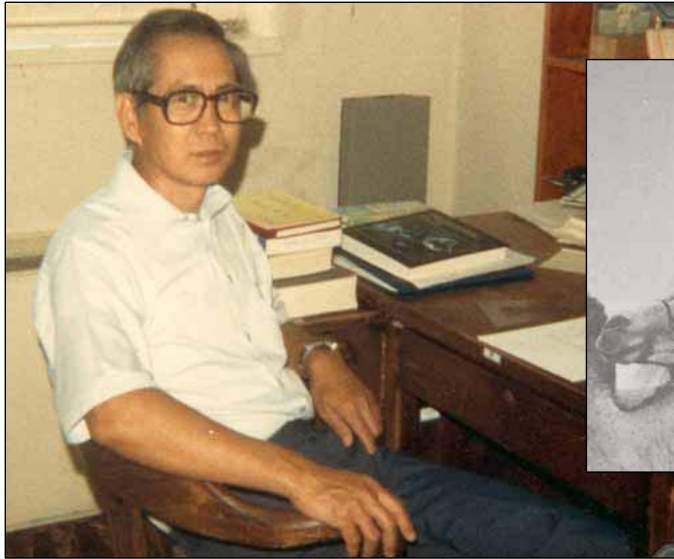
107

AU – 1980s



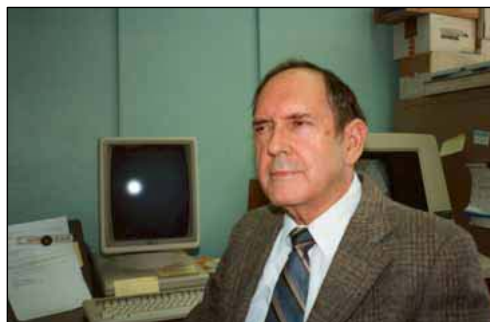
108

AU – 1980s



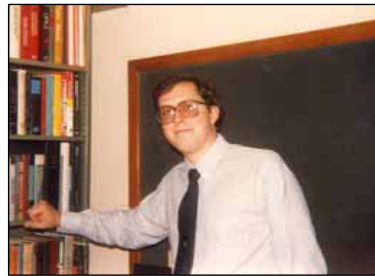
109

AU – 1980s



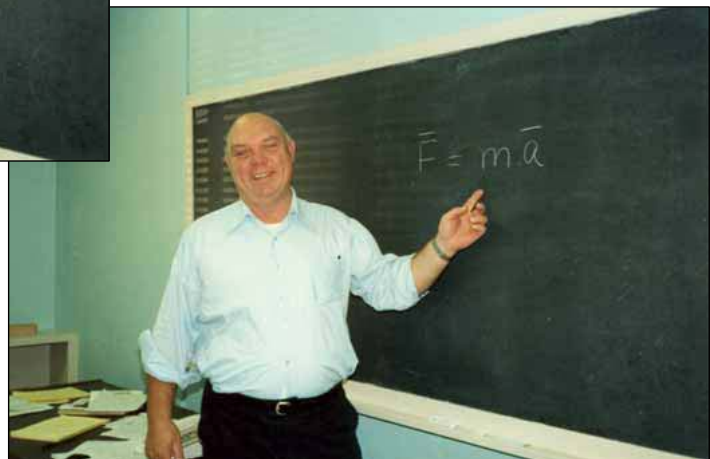
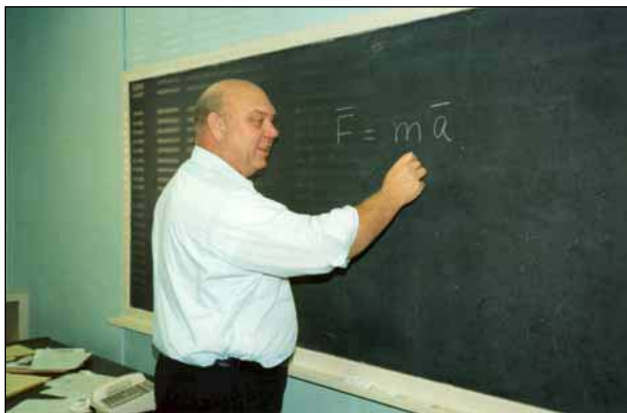
110

AU – 1980s



111

AU – 1980s



112

AU – 1980s



113

AU – 1990s

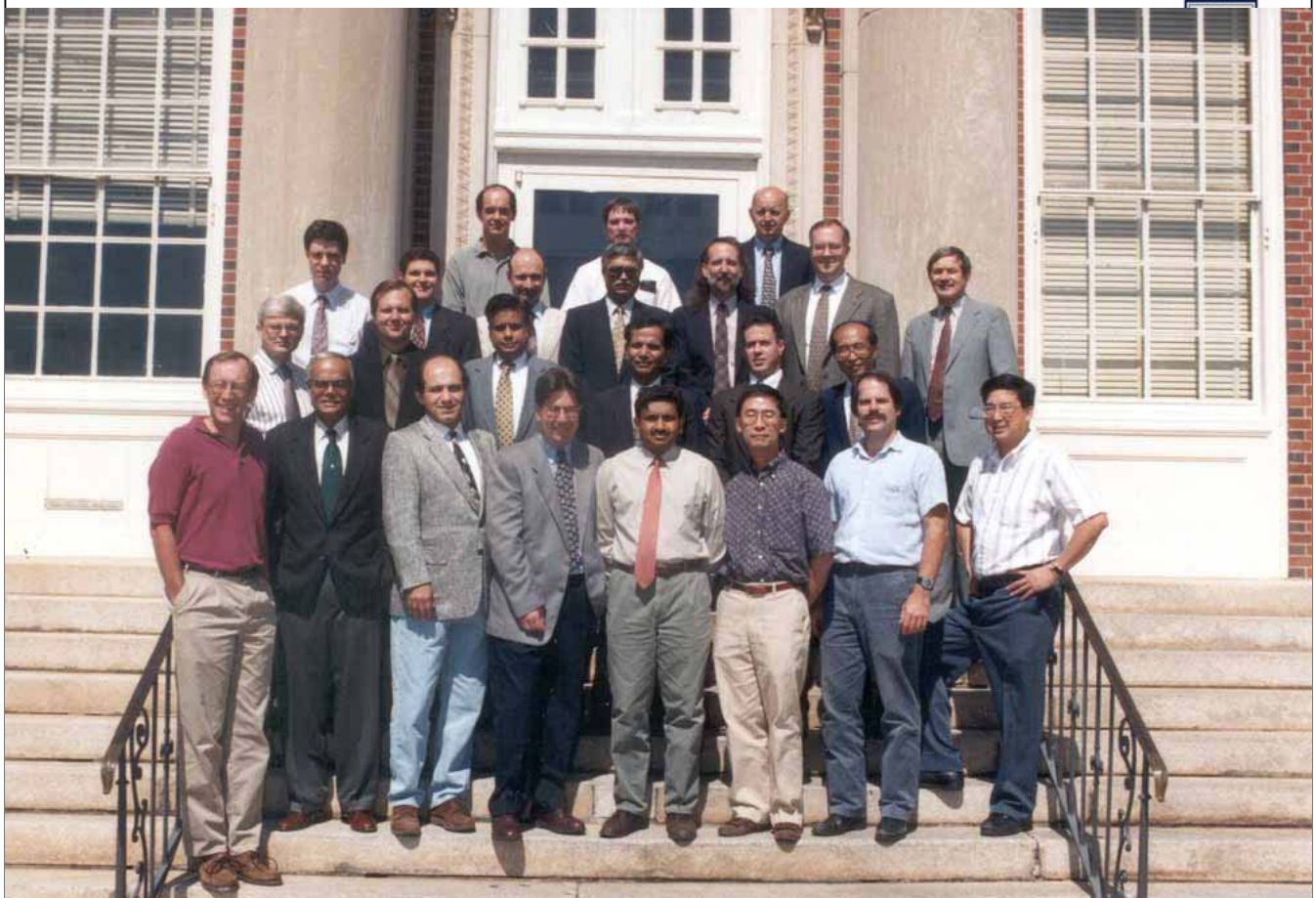
Back to Racing



AU – 1990s



115



ME Faculty - 1998

116

AU – 2000s

Design and Manufacturing Laboratory



117

AU – 2000s

Annual Elements of Mechanical Engineering Conference



118

AU – 2000s

Renovating Ross Hall (2004-2006)



119

AU – 2000s

Renovated Ross Hall



120

THE FUTURE



Shelby Center – Phase 2
New ME and Advance Laboratory Buildings



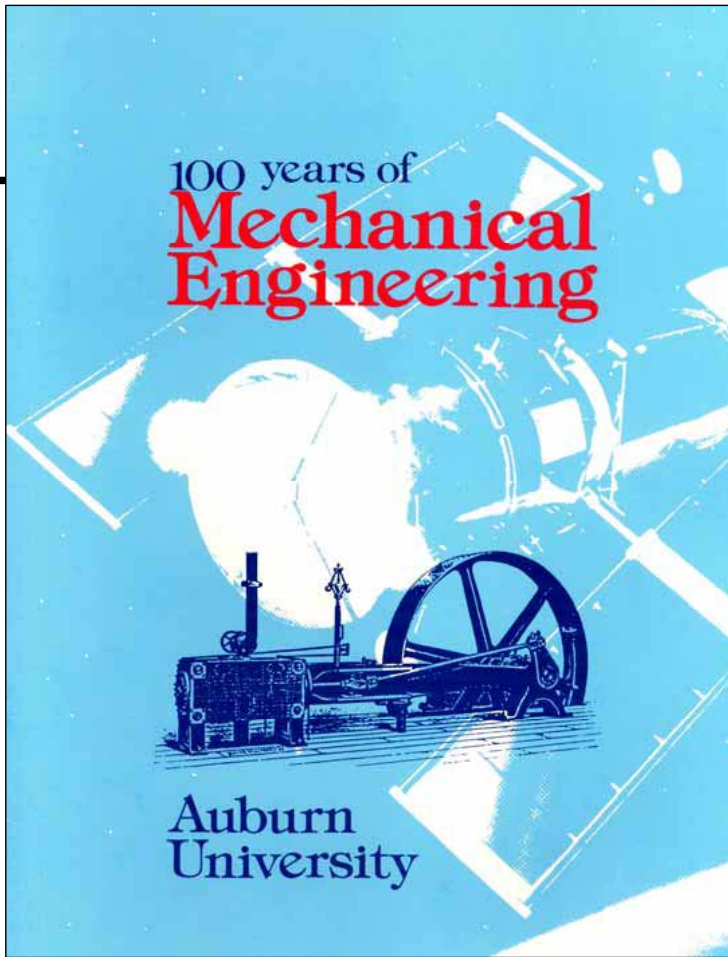
121

AU – First 120 Years

Summary

- AU Mechanical Engineering Began in 1885 as the Department of Mechanics Arts
- ME Provided the First Dean of Engineering
- We Have Been and Continue to be one of the Strongest Departments at Auburn, and One of the Premier ME Programs in the Southeast
- We Graduate Highly Successful Students
- Our Faculty Have a Colorful History

122



GINN COLLEGE OF
ENGINEERING

*Mechanical
Engineering*