

PROGRAM (STUDENT) OUTCOMES SUMMARY
Department of Polymer and Fiber Engineering
Spring 2010

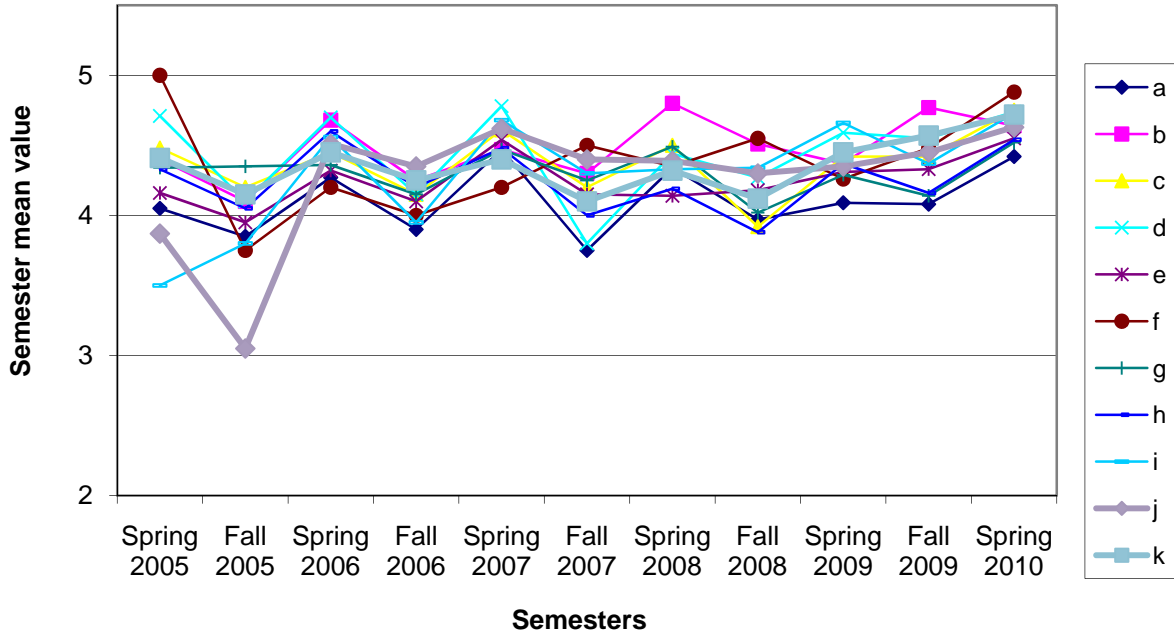
Outcomes

- a. An ability to apply knowledge of mathematics, science and engineering
- b. An ability to design and conduct experiments, as well as analyze and interpret data
- c. An ability to design a system, component, or process to meet desired needs
- d. An ability to function on multi-disciplinary teams
- e. An ability to identify, formulate, and solve engineering problems
- f. An understanding of professional and ethical responsibility
- g. An ability to communicate effectively
- h. A broad education necessary to understand the impact of engineering solutions in a global and societal context
- i. A recognition of the need for, and ability to engage in life-long learning
- j. A knowledge of contemporary issues
- k. An ability to use the techniques, skills, and modern engineering tools necessary for engineering practice

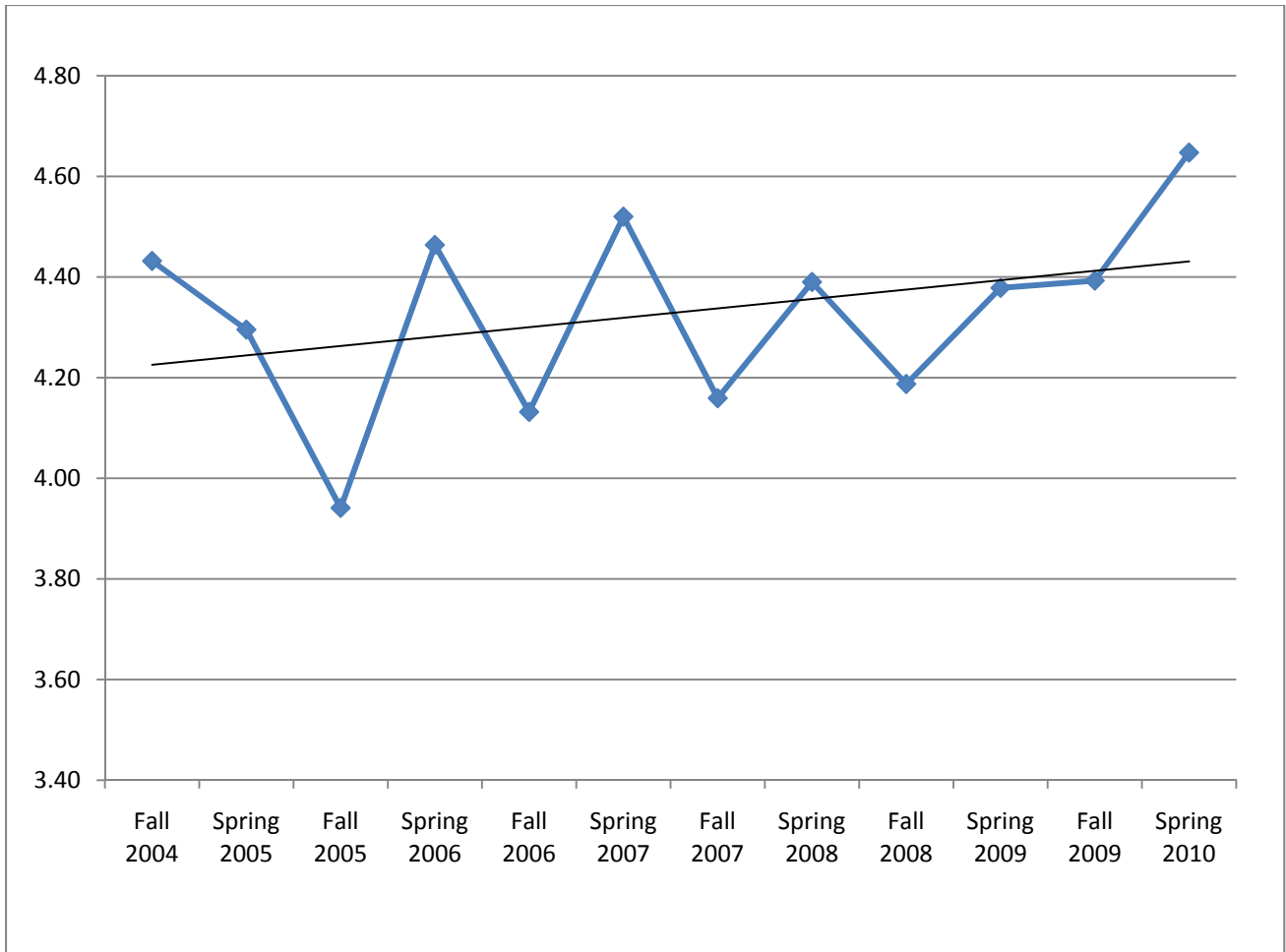
Spring 2010 Semester program (student) outcomes

outcome	ENGR 1110	PFEN 3200	PFEN 3400	PFEN 3500	PFEN 4500	PFEN 4820	mean of outcomes
a	4.96	4.85	3.5	4.1	4.6	4.5	4.42
b	4.94	4.88	4.5	na	4.3	4.6	4.64
c	5.00	5.00	na	na	4.5	4.5	4.75
d	4.98	4.82	4.5	5.0	na	4.4	4.74
e	4.94	4.82	na	4.0	4.6	4.4	4.55
f	4.98	4.73	5.0	na	na	4.8	4.88
g	4.97	4.73	4.1	na	4.5	4.3	4.52
h	4.94	4.73	na	na	4.2	4.3	4.54
i	4.96	4.64	na	na	na	4.6	4.73
j	4.94	4.73	4.5	5.0	4.2	4.4	4.63
k	4.94	4.73	na	na	4.5	4.7	4.72
mean of outcomes	4.96	4.79	4.35	4.53	4.43	4.5	4.63

Cumulative Student Outcomes



Program (student) outcomes for each semester since Fall 2004



Overall student outcomes averages for each semester since Fall 2004