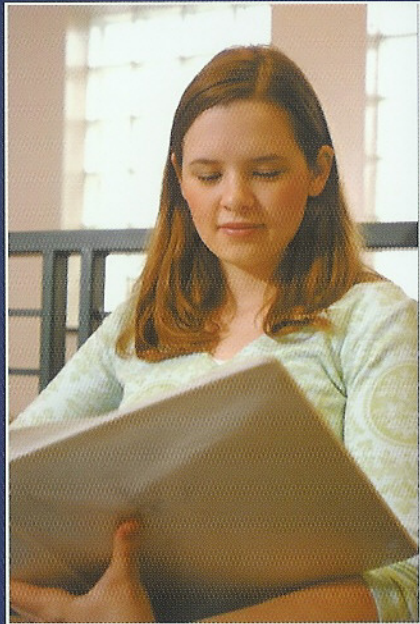


**Samuel
Ginn
College
of
Engineering**

**Industrial and
Systems Engineering/
Mechanical Engineering
AUTOMOTIVE
SCHOLARSHIP**

AUBURN UNIVERSITY



The Scholarship

The \$3,125 per year scholarships will be awarded for up to four years for undergraduate and doctoral students; and for up to two years for master's students. For undergraduate transfer students, the award duration will be reduced according to length of time until degree completion.

A change of major outside of industrial or mechanical engineering will result in loss of the scholarship. The scholarship is renewable each year as long as eligibility criteria are met.



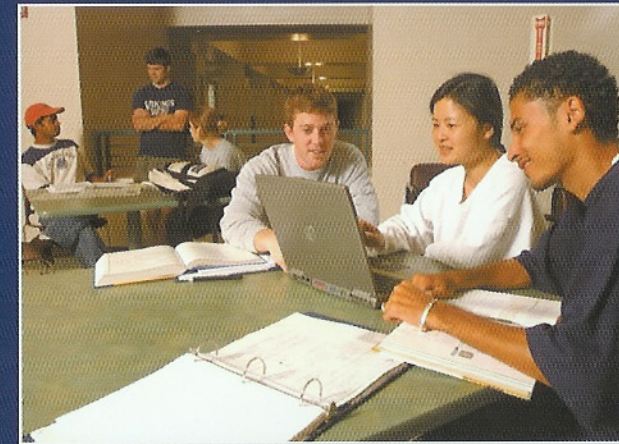
Minimum Eligibility Requirements

- U.S. citizen or permanent resident
- Full-time student
- Mechanical or industrial engineering student at the bachelor's, master's or doctoral level interested in a career in automotive manufacturing
- Academics
 - Freshman: minimum ACT 21 and GPA 3.0 (B average)
 - Transfer: minimum transfer GPA 3.0 and high school GPA 3.0
 - Graduate: minimum GRE 1150 (verbal plus quantitative) and undergraduate GPA 3.0
- Demonstrate financial need and academic promise

How To Apply

You may complete an on-line application at any time:

www.eng.auburn.edu/ie/csems



Scholarships Benefits

- Industrial tours, seminars, internships and on-campus research experiences
- Complementary extracurricular activities such as participation in student vehicle design and building teams (Mini Baja, Formula SAE, solar car)
- Community outreach to K-12 students and teachers
- Student recruitment, support and mentoring provided by the BellSouth Minority Engineering Program, and the local student chapters of the Society of Women Engineers, the National Society of Black Engineers, the American Society of Mechanical Engineers, the Society of Automotive Engineers and the Institute of Industrial Engineers

For More Information Contact:

Alice E. Smith
Professor and Chair
Department of Industrial
and Systems Engineering
206 Dunstan Hall
Auburn University, AL 36849
334.844.1400
334.844.1381 (fax)
aesmith@eng.auburn.edu

John L. Evans
Associate Professor
Department of Industrial
and Systems Engineering
209 Dunstan Hall
Auburn University, AL 36849
334.844.1418
334.844.1381 (fax)
jevans@eng.auburn.edu

Peter D. Jones
Associate Professor
Department of Mechanical Engineering
211 Ross Hall
Auburn University, AL 36849
334.844.3368
334.844.3307 (fax)
pjones@eng.auburn.edu

www.eng.auburn.edu/ie/csems



**GINN COLLEGE OF
ENGINEERING**

Auburn University
www.auburn.edu

Auburn is an equal opportunity educational institution/employer.
2004-001-CoE



Over the past 10 years, Alabama has welcomed Mercedes-Benz, Honda, Toyota, International Diesel, Hyundai and their suppliers to its borders, resulting in more than 30,000 new jobs with an annual payroll of \$1.4 billion. The addition of BMW, Nissan, Volvo and Saturn in neighboring states has further increased the economic impact.

Industrial and mechanical engineers have played a critical role in the inception and operation of these automotive enterprises and are recruited at all degree levels; the demand for engineers in this sector is expected to remain strong.

If you are interested in a career in the automotive industry, you may want to consider applying for this special automotive National Science Foundation (NSF) scholarship.