

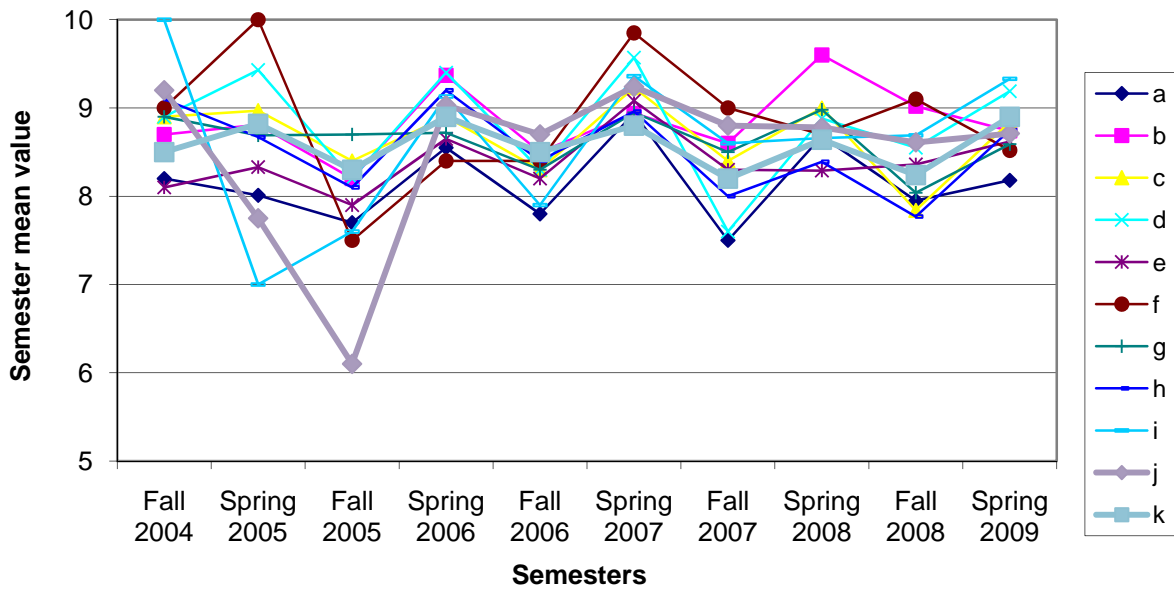
**ABET STUDENT OUTCOMES SUMMARY**  
**Department of Polymer and Fiber Engineering**  
**Spring 2009**

**Student Outcomes**

- a. An ability to apply knowledge of mathematics, science and engineering
- b. An ability to design and conduct experiments, as well as analyze and interpret data
- c. An ability to design a system, component, or process to meet desired needs
- d. An ability to function on multi-disciplinary teams
- e. An ability to identify, formulate, and solve engineering problems
- f. An understanding of professional and ethical responsibility
- g. An ability to communicate effectively
- h. A broad education necessary to understand the impact of engineering solutions in a global and societal context
- i. A recognition of the need for, and ability to engage in life-long learning
- j. A knowledge of contemporary issues
- k. An ability to use the techniques, skills, and modern engineering tools necessary for engineering practice

outcome	ENGR 1110	PFEN 3200	PFEN 3400	PFEN 3500	PFEN 4500	PFEN 4820	mean of outcomes
a	8.68	7.58	8.00	8.20	7.60	9.00	8.18
b	9.28	9.33	9.40	8.70	7.00		8.74
c	9.23	9.37	8.40		8.20	9.00	8.84
d	9.42	8.64	8.60	9.30		10.00	9.19
e	8.46	9.36	8.20		8.10	9.00	8.62
f	8.36	8.67					8.52
g	8.99	9.47	8.40	8.60	7.10	9.00	8.59
h	9.04		9.00		8.20		8.75
i	9.66					9.00	9.33
j	9.13		8.40	9.30	7.70	9.00	8.71
k	8.85	9.53	8.80	9.00	8.20	9.00	8.90
mean of outcomes	9.01	8.99	8.58	8.85	7.76	9.13	<b>8.76</b>

### Cumulative Student Outcomes



Notes:

- Spring 2009 average is higher than the Fall averages, as usual.
- The difference between the Fall and Spring is getting less, i.e. the overall average is converging and slightly but steadily increasing as shown below.

